



Home-Dzine^{online}

It's all about caring for and improving your home

September Issue 2

let the sun shine in!



**and even more...
easy cube shelves - stylish wall unit
10-minute bedroom makeover
garden trolley - a basic box**



a word or two

This is definitely my favourite season. My bulbs are blooming, new buds are sprouting everywhere in the garden, and indoors, it's a chance to refresh and renew with a coat of paint and some new accessories. Try out our 10-minute makeover in your bedroom. You don't have to spend a fortune to transform any room in your home - we show you how with Home Comforts.

For all you garden junkies, this month we have several projects that will get you outdoors. Take some time out to relax and unwind and get your garden in tip-top shape for summer.

And while interior designers say that white is out, there is still no fresher colour for keeping our hot home interiors cool during the summer months. This month's feature article shows you that there is more to white than just white!

Finally, all the Divas that have recently attended courses were blown away by my wall unit. So I have decided to put in this issue for anyone who wants to make it. This is another project that can save you thousands and can be modified to suit your existing interiors - give it a try!

Until next month

Janice

PS. DIY Divas welcomes Thabiseng as part of the team! Thabiseng will be out and about in the local community to find out what projects you would like to see in Home-Dzine Online.

Home-Dzine Online is written and compiled by Janice Anderssen. All projects in this issue, or any other issue, remain the property of Home-Dzine and Janice Anderssen, and may not be copied or reproduced in any manner whatsoever without written permission.

contents

pure light - white	3
No other colour works as well for creating bright, fresh spaces. And no other colour can be combined with so many other hues and shades.	
or colour splash	6
A change in your decorating scheme is so easy when you use white. Thanks to the neutrality of white you can change patterns and textures in a flash.	
how green is your floor?	7
It's on the news, it's in the media, everywhere we look we hear about reducing our "carbon footprint". But what exactly is a carbon footprint, and how do we reduce it?	
10-minute bedroom makeover	8
Spring always seems to bring out the 'decorating fever' in me. Like the saying goes, "A change is as good as a holiday!"	
spice up interior doors	9
Are your doors a bore? Transform an interior door with these easy-do ideas using paint, wallpaper, and decorative mouldings.	
practical projects	10
stylish wall unit	11
Expect to pay R8000 upwards for this wall unit. The cost to make this project... R3000. And Designed by Janice Anderssen our DIY Diva, you can make this wall unit over a weekend.	
cube shelves	14
Once again, the versatile cube shows you just how easy it is to make your own shelves.	
products we love	16
basic box	17
With Christmas just around the corner, here's a project that you can get the kids involved in.	
up the garden path	20
If you have an area in your garden that needs some attention, find inspiration here to help you turn it into a welcoming path.	
decorative stepping stones	21
No building experience necessary for these easy stepping stones! A quick and easy project to make your own stepping stones for any garden path or walkway.	
garden trolley	23
A built-in storage rack keeps garden tools steady, and the oversized bin can take on big loads with ease. Wheels allow you to move the cart around.	
q-zone	25
directory	26

copyright of articles and images, not submitted and licensed by home-dzine or janice anderssen, remain the property of the owner, and home-dzine or janice anderssen claims no intellectual property rights.



pure light

No other colour works as well for creating bright, fresh spaces. And no other colour can be combined with so many other hues and shades.

When buying a newly built home, unless you are lucky enough to have a builder that pays particular attention to detail, chances are that your interior walls will be covered with a bare minimum of white paint. The easiest way to check is to wipe down a section of the wall with a clean, damp cloth and watch the paint disappear! Never mind the fact that few builders are experts when it comes to high quality interior paint jobs. Furthermore, your new home generally comes with flat-painted walls and glossy trim – or the basic paint job done by most builders - but you don't have to live with an inferior paint job!

The options are endless...

Nothing looks fresher than pure white walls. It allows you to create a backdrop for dark wood furniture and settle into your home before deciding upon colour. And decorating your new home can be as simple as adding a few touches of colour, either with paint, or with accessories. There is something timelessly classic about white-on-white interiors.

Prominent Paint Decorating Centres' offer a wide range of paint possibilities that allow you to give your new home some of the latest in wall hues for your own décor. So why not consider giving yourself a little time before your move in to paint, before you complicate matters with furniture and accessories?

The current interior decorating trends allow each and every homeowner to be a little more creative with a paintbrush and roller. And paint is most definitely the most inexpensive ways to enhance your new home. And for those not very handy with a paintbrush, today's hottest decor trend is decorative wallpaper!

Tired of the look? Changing the colour of your interior walls is so easy. It's simply a matter of cleaning the wall, choosing your paint and colour, and rolling on new interiors.

A hint of...



green



blue



red



yellow





In dark rooms white instantly lightens and brightens, accenting the strong hue and bringing visual relief, and painting trim a slightly tinted shade of white makes the colour look cleaner and clearer while introducing a mere hint of contrast. And remember that white is not just white - you will be amazed at how many shades of white there are! Your local Decorating Centre will be able to recommend a range of whites that go from warm to cool, and white is still the freshest and cleanest look around. All it needs is a quick touch up every couple of years.

To pick your perfect shade of white, start with the colour swatch and hold it up to a variety of white or pale neutral colours to see which ones you like. The idea is to make everything in the room a shade of white. When you use the different shades of whites like creams, very faint blues, greens or pinks, it gives depth to the room while keeping the surroundings pure.



Kitchen in white

Cool and clean comes to mind when I think of a white kitchen. Glossy surfaces that are easy to clean in a crisp white, white appliances that contribute to the look of open space and a timelessly modern look. If a completely white kitchen is not your style, introduce splashes of colour here and there with accessories, or go dramatic with black!

If you're looking to add more than a bit of white to your home to give it a fresh new feel, here are a few tips to help you get started:

Classic dining

Clean lines and crisp white tableware are always classy and never out of date and



keep the focus where it should be, on food and conversation. And a white dinner service need not be boring or bland, add bold colour with placemats, or a centrepiece of flowers or fruit. It is so easy to dress your table up or down with a white table setting and a few carefully chosen pieces. Go for high glamour with white and silver, romantic with white and red, or add your favourite colours for everyday family dining.

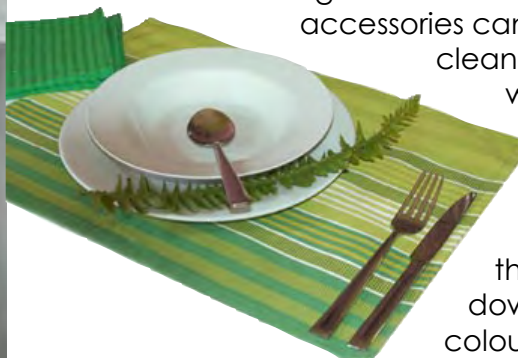
Black on white

For the homeowner with little or no colour sense, any colour works well with white! Dress up white walls and make an impact with wide, white mats and black frames. Anything that would normally get lost in a room full of colours will get your full attention in a room that's all white.



Even if you just decide to have more white in your home accessories, it can provide a calming effect. Your white

accessories can provide a clean slate to play with just as your white room can, and you can dress them up or down with colourful table linens, food, and flowers. Visit your local Home Comforts store to see the latest range of colourful accessories for your home.



Home Comforts
Ackermans

or colour splash!

A change in your decorating scheme is so easy when you use white. Thanks to the neutrality of white you can change patterns and textures in a flash, or even change the entire room.

With an all-white room, or even one that is predominantly white, you can play with colour in so many different ways. Bring in a simple bowl of fresh daffodils and see how it stands out. Or toss a couple of bright green pillows on a white sofa in a white room and watch the room change before your eyes.

White isn't just the absence of colour; it's a backdrop against which you can play with almost any colour you like.



ABOVE: *White is the perfect accompaniment for bright colour. In this room glossy white furniture is displayed against a cerise pink wall, giving the room a girly feel without overpowering.*



ABOVE and RIGHT: *Want to try something new? Choose your favourite colour and splash it on one wall. A fresh grass green in an entrance hallway immediately welcomes and relaxes, while orange in an all-white dining room instantly refreshes with bold, vibrant, sunny colour.*





how green is your floor?

It's on the news, it's in the media, everywhere we look we hear about reducing our "carbon footprint". But what exactly is a carbon footprint, and how do we reduce it?

Simply put, your carbon footprint is the effect that your lifestyle has on the environment in terms of CO₂ (carbon dioxide) emissions, which in turn contribute to the acceleration of global warming and climate change.

Every single homeowner has the ability to reduce their carbon footprint. The choices we make in our homes, our daily habits, and even what we buy and throw away all influence our carbon footprint. In an effort to be more "green" in your home, take a closer look at more environmentally-friendly and sustainable resources when looking at decor choices.

When it comes to flooring options eco-friendly flooring is considered to be any flooring that is sustainable, contains recycled content, is recyclable, and leaves a small carbon footprint. For this reason products that begin as a natural products such as bamboo, certain wood species, and cork, are considered to be extremely eco-friendly.

Not only eco-friendly, these flooring options are beautiful to look at, require minimal maintenance - another added credit on the green scale - and are easily installed in any home.

And now you have the option to choose from Wicanders Cork Flooring, Style Bamboo Flooring, Wilsonart Laminate Floors, and Egger Flooring Products - all available from CPW. Contact CPW today and get linked with a professional contractor in your area.





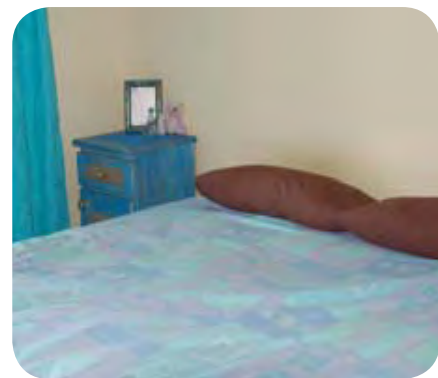
I won't deny that I'm a big fan of Home Comforts linen, curtains and accessories. I never miss out on an opportunity to pop in and see what's new!

This month was no exception. They have a wide range of mix-and-match bed linen and curtains that allow you to transform any room in the home in a matter of minutes. I decided to take two different settings and transform a bedroom to show you how you can do it - without spending a fortune.

ABOVE:
Crisp white and bold orange are combined with neutrals that provide a fresh, new look for a dull bedroom. The cost = R600

RIGHT:
Rich earth tones in silky fabrics on both the windows and bed have transformed the bedroom into a romantic space. Cost = R650

Voila! Two new looks.



Spring always seems to bring out the 'decorating fever' in me. I want to transform my rooms for a new season, to not only give my home a new look, but also to refresh my life. Like the saying goes, "A change is as good as a holiday!"



10-minute bedroom makeover





spice up interior doors

Are your doors a bore? Transform an interior door with these easy-do ideas using paint, wallpaper, and decorative mouldings.

It's so easy to transform a plain hollow-core door from drab to fab. Depending on your own particular style, you don't have to add the wallpaper pattern, simply spice up plain interior doors with decorative moulding for doors with a bit more glam. And you can complete this project in a day!

Pick a style, any style. If it's wallpaper you want, select that first. It will inspire your choice of decorative mouldings.

- You will need:**
- Decorative moulding**
 - Wallpaper offcuts or wrapping paper**
 - Wallpaper paste**
 - Water-based glaze coat**
 - Hammer and panel pins**
 - Nail set**
 - Alcolin wood glue**
 - Alcolin Lite Fill**
 - Gloss paint and accessories**
 - Mitre box and saw**

Here's how:

1. Gather your supplies together.
2. Give the door a good clean with Sugar Soap and rinse well. Paint the door and mouldings, allowing them to dry between coats.
3. Mark your design on the door with pencil. Cut wallpaper or wrapping paper pieces to size and use wallpaper paste to attach to the door. Smooth and leave to dry.

4. Cut all the pieces of trim using a mitre box and handsaw. Arrange them on the door before attaching, making sure to get a nice fit at the corners.



5. Apply Alcolin wood glue to the back of the trim and attach to the door using a hammer and panel pins.

DIY Tip:

Use Alcolin Lite Fill to help join any gaps at the corners. Once it's painted you won't see the imperfections.

6. After the pieces are attached, use a nail set to sink the nail heads below the surface of the moulding. Fill the nail holes with Alcolin Lite Fill and let dry before touching up with paint.

Dress up with vintage or salvaged knobs and hardware.

practical projects

Fenced away

Tired of all those cables lying around on the floor? Think quick and easy project uses 6mm Supawood cut into picket fence shapes and glued to the skirting with a hot glue gun - no more ugly cables - no more accidents! If you think that a picket fence is a bit too kitschy for you - you can use any design you want!



In plain sight

Are you the family taxi service? Now here is a practical project to ensure you don't forget an important event!

Grab yourself a piece of 12mm Supawood cut to the size that you want. Spray the entire board with Rust-Oleum Metallic Silver Spray Paint and leave to dry. Mask of the sections for the blackboard and use Rust-Oleum Chalkboard paint on those sections. To finish off add a small shelf to keep your chalk handy, and a couple of coat hooks - and you're finished!



Easy to handle

It's always handy to keep some of your Supawood offcuts for small projects that can be done in a jiffy.

A 12mm or 18mm piece of Supawood, primed and painted with Prominent Paints - Matt - White - and finished off with a water-based glaze coat, is perfect for making this tray project. Simply cut, sand, paint and add two decorative handles at either side. Now you're ready to serve in style!



TIMBERCITY

 **PG BISON**

Supawood comes in a board size of 2750 x 1830mm. If you ever have a project that does not require a full board, keep any offcuts for smaller projects such as these above. I normally ask my local Timbercity to cut offcuts into a manageable size, such as 600 x 400mm, so that I always have small pieces lying around when I come up with ideas. Remember to specify PG Bison Supawood to ensure the best product.

stylish, affordable wall unit

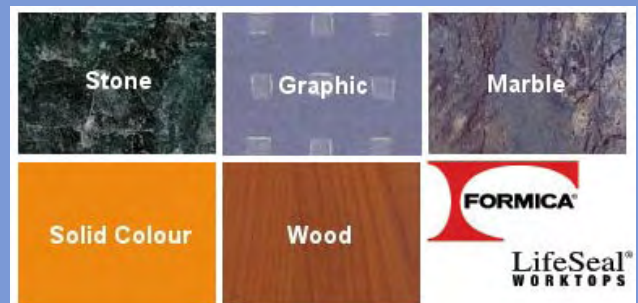


You can expect to pay R8000 upwards for a wall unit of this size. The cost to make this project... R3000. And Designed by Janice Anderssen our DIY Diva, you can make this wall unit over a weekend.

value
for
money

You will need:

- 1 6mm BisonLam - Super Black
 - 32mm Formica LifeSeal Worktop - Black Slate
 - [2] 50 x 50mm Pine x 2m lengths
 - [1] Black Sparkle perspex (cut to size)
 - [4] 6mm Aluminium channel
 - [8] Plastic feet
 - [32] Steel angle brackets
 - Wall plugs and screws
 - Wood screws
 - Alcolin Wood Glue
 - Alcolin Xtreme glue
- TOOLS: Hammer drill, drill/driver and bits, spirit level, pencil, tape measure, hammer and nail punch, clamps*



EXPLORE THE RANGE

Note: The measurements provided for materials can be adapted to fit any space. For the project we used BisonLam - Super Black, but this can be substituted with any of the range of finishes in the BisonLam range. Visit: www.pgbison.co.za for options.

Here's how:

The Plan

You will need to draw up a detailed diagram for the layout of the wall unit, and it is essential to measure everything twice to get it one hundred percent accurate before you have the wood cut to size.

On the diagram be sure to indicate which ends of the individual boards need to be edged. Having your boards cut and edged saves a lot of time and aggravation. They have the right equipment to finish boards perfectly.

DIY Tip:

Don't decide to take a short cut and have all the boards edged, as some pieces need to be glued together, and wood glue does not stick well to a laminated surface.

Assembly

Wall Unit

1. Start by assembling the wall unit. Mark on the outer top and bottom where the uprights are to be positioned. Drill pilot holes and then screw the uprights to the top and bottom of the wall unit. Later on you will put black screw caps on the screw heads to leave a neat finish.
2. Use your spirit level and a long straightedge to mark where the bottom of the wall unit will sit. Have someone help you to hold the wall unit against the wall and use a pencil to mark around the inside of each interior division.
3. Cut the 50 x 50mm pine to the width of each section of the wall unit. Use a spade bit to create a hole to half the depth. E.G 25mm. Use a drill bit the same size as the wall plugs and screw to drill through the full depth.
4. Position each support against the wall at the top - in line with your pencil mark. Use a nail punch and hammer to tap into the hole and mark the wall. This is where you will drill for the wall plugs and screws.
5. Mount supports in all compartments. You will need someone to assist you with this step, to hold the wall unit in position on top of the supports. Screw the wall unit from the top down into the support. Finish off with black plastic caps on screw heads for a professional finish.

see diagram on back page

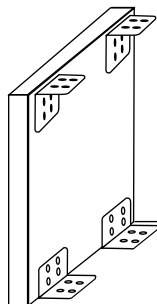
Shelves

1. The shelves need to be made up for mounting - see diagram on back page for construction diagram. All joining is done with Alcolin Wood Glue and clamped into place overnight. Before clamping be sure to clean up any glue that has squeezed out of the joins. Use a slightly damp cloth for this.



2. The shelves are mounted in exactly the same way as the Wall Unit. - Step 3. The built shelf is inserted onto the support and screwed from the bottom into the support - see image right.

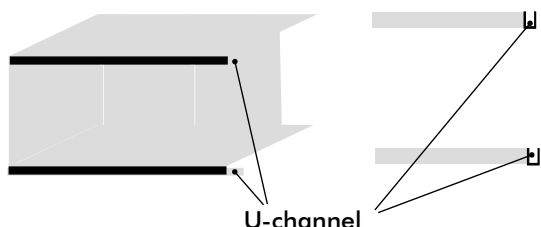
Base unit



1. This section is assembled using angle brackets. Lay the bottom on a flat surface, position the uprights and use 12mm wood screws to join together with angle brackets.

2. Place the countertop over the base and attach to the angle brackets at the top of the uprights.

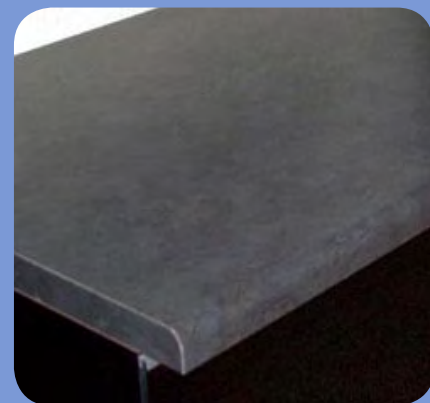
3. Lay the unit on its back on a flat surface. Cut two pieces of aluminium channel to the exact length of the base unit. Apply Alcolin Xtreme to the edged top and bottom sections of the base unit and position the track.



DIY Tip:

To make affixing the channel easier, put masking tape over the channel and onto the base to hold the channel in position while it dries.

NOTE: If you want to add doors to the shelf unit, use the same method as for the Base Unit (point 3).



what is a countersink bit?

During our DIY Diva classes I often get "Oohs" and "Aahs" when I start talking about the countersink bit. It would appear that this wonderful drill attachment is little known, and yet an essential part of most woodworking projects.

A countersink bit is used to create a 'dip' in the surface of the wood so that when joining pieces together the head of the screw is not seen. Once you have drilled your pilot hole all you need is a couple of turns of a countersink bit to create a space for the screw head, some wood filler to fill in the top, and your screw head and hole are no longer visible.



A 12MM
COUNTERSINK
BIT IS AN
ESSENTIAL
ITEM FOR
YOUR DIY
TOOLBOX.

cube shelves

Once again, the versatile cube shows you just how easy it is to make your own shelves.

Assemble them in any way you want: as room dividers opening out to both sides, or classically along the wall. Or use them to form a practical coffee table with storage space.

reader request

You will need:

- [2] Bases 400 x 400 x 19mm Supawood
- [2] Side panels 362 x 400 x 19mm Supawood
- [1] Rear panel 362 x 362 x 19mm Supawood
- [4] Felt pads

Wood screws 4 x 35mm

Alcolin Lite Fill

Primer, gloss paint and painting accessories to finish

TOOLS: Sander, Drill/Driver, drill bits and countersink bit, sanding pads 120 to 240-grit, tape measure and pencil

Here's how:

1. Place a side panel against each head/base board, so that both form a right angle at which they will later be joined with screws. Mark the edge of the side panel on the inner surface of the head/base board. Mark the edges of the rear panel in the same way on the head/base boards and the side panels.
2. Mark the positions where the three holes will be drilled, half a board thickness (= 9.5 mm) from the outer longitudinal edges: one in the middle, the other two 40 mm each from the narrow side of the board. Pre-drill the holes using the drill and a 4.5mm wood drill bit. Countersink them on the outer sides deep enough to ensure that the screw heads do not protrude - see image right.
3. Supawood surfaces are highly absorbent. You should prime them with universal undercoat. When doing so, you may need to pay particular attention to the edges (i.e. apply several layers).



DIY Tip

To ensure that the Supawood for the side panels and rear panel does not tear when connected with screws, it is best to pre-drill the screw holes.



Bond with us!

With a Virgin Money Home Loan you will be left with more cash in your pocket, immediate answers, no hidden fees and you can pay off your home loan in 30 years.

For more information on the Virgin Money Home Loan [click here](#).



Terms and conditions apply. Virgin Money South Africa (Pty) Ltd. Supported by Absa Bank Ltd, Reg nr 1986/004794/06. An authorized financial services provider. Registered Credit Provider, Reg nr. NCRCP7.



4. Finely sand the primed surfaces and edges; increase the grit of the sanding paper from 180 to 220 to 240.

5. You will be painting the supawood BEFORE assembling the cubes. We have made the inner surfaces a different colour to the outer surfaces. To do this, it is best to paint the inner surfaces first:

6. Join each head/base board to a side panel with flat head screws (4 x 35 mm) to form an angle piece. Please note: Here it is important that you predrill 3.5 mm through the holes already drilled in Point 1 before driving screws in the edge of the part that is going to be joined. Otherwise, there is a risk of the supawood tearing.

7. Join the two angle pieces to form the carcass. Then put its rear edges over the rear panel, which is lay flat on the work surface and has already been fully painted. Finally, screw together the carcass and the rear panel.



Note:

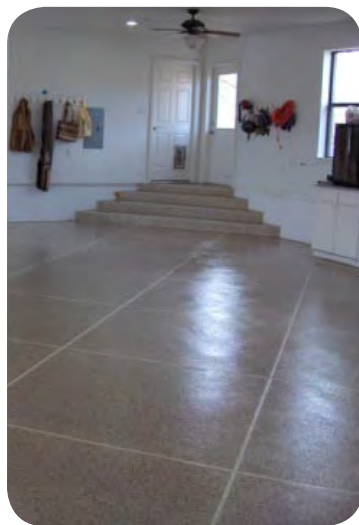
The boards are butt-jointed at the top and bottom with three screws in each; the rear panel sits in the opening at the back. This construction removes the need for time-consuming dowelling and gluing, but the screw heads remain visible. You can fill these later and paint over them.

products we love

Ideal for garage floors, patios, stairways, walkways, porches and commercial concrete surfaces, Rust-Oleum's Epoxy Kits are used worldwide in factories, warehouses, commercial and residential properties.

The Epoxy Professional Garage Floor Kit

A solvent based epoxy for inside concrete floors (garage) with a semi-gloss finish. Has superior adhesion and durability, and can withstand heavy foot and vehicle traffic and is superior in withstanding chemicals and corrosion. This product has superior chemical resistance.



The Epoxy Garage Floor Kit

A waterborne epoxy that can be used indoors (garage) with a semi-gloss finish. It is a one coat application that eliminates the hot-tire pick up, easy to care for with a low odour and no dangerous etching. Clean up is easy with water and soap.



Pros/Cons for Floor Coatings

Water-based products

- + easy to apply
- + fast drying (usually 2 hours between coats)
- + very low odour
- + reasonably priced
- + can be applied over existing paints

- short life expectancy
- light traffic/activity only
- one coat application not recommended

Oil-based products

- + easy to apply
- + mid-range odour only
- + can be washed within days of application
- + reasonably priced
- + wide colour range

- lacks flexibility; can chip
- slow drying time (6-8 hours between coats)

Epoxy Floor Coating

- + very hard finish
- + thick, long lasting paint film
- + wide range of chemical resistance
- + can be applied in one coat
- + available in different gloss levels

- most products are 2 parts
- safety clothing/equipment recommended

Buy Rust-Oleum EpoxyShield at Mica, Jack's Paint or Builder's Warehouse, or contact Tile & Floor Care direct: sales@ffc.co.za

basic box

With Christmas just around the corner (can you believe it!), here's a lovely project that you can get the kids involved in. This project doesn't use any serious power tools, and where tools are needed, mom or dad can do the cutting.



great idea!

You will need:

- [4] equally sized pieces for the sides
- [1] pieces cut to fit the top
- [2] equally sized pieces for the bottom and lid insert
- [1] piece for the handle

Alcolin Wood Glue

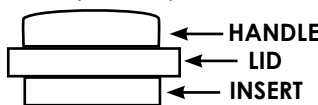
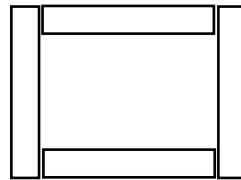
Panel pins

8mm dowels and dowel centres

TOOLS: Jigsaw or handsaw to cut the wood to size, drill/driver and 8mm wood bit, tape measure and pencil.

Here's how:

1. Use Alcolin Wood Glue to glue the sides of the box together.
2. Apply wood glue to the edges of the bottom piece and insert into the base. Use wood filler in any gaps. Leave the box to dry overnight.
3. To make the lid, drill two 8mm holes in the centre of the lid for the handle. Insert dowel centres and position the handle over the dowel centres to mark the position for the holes in the underside of the handle. Drill 8mm holes in the handles where marked by the dowel centres. Pour a bead of wood glue into the holes, insert the dowels and attach the handle to the lid.
4. Use wood glue and panel pins to attach the lid insert to the underside of the lid. This will create a snug fit for the lid.



See next page for tips on sanding your box.



tricks for chicks!

The proper preparation of surfaces gives your projects a smooth base before painting or staining.

1. Wipe the surface of the project clean with a lightly damp cloth. Choose an Alcolin Wood Filler to match the colour of the wood used for your project - there are a wide range of colours for almost any type of wood. A close match is particularly important for projects that you will stain later.
2. Apply Alcolin Wood Filler - either with a putty knife, paint scraper, or your finger. Put a small amount of wood filler on the area you need to fill. Drag the scraper across the area, keeping the blade parallel to the wood to smooth the filler evenly. Scrape off any excess that is not directly on the area you are filling. A large area may require a second application; be sure to allow the first to dry.
3. Allow ample time for the wood filler to dry. Wood filler can shrink when it dries, so check to see if more filler is needed. To ensure uniform sanding, lightly pencil lines onto the surface of your project. You'll know you've sanded all areas when the markings are no longer visible.
4. When sanding by hand, use a sanding sponge or block to apply pressure evenly across the sandpaper, and always wear a dust mask when sanding. Start sanding with a coarse-grit sandpaper (80) and progress to the finest grit (240). Each successive pass with a finer grit should take less time than the last one and should remove sanding marks from the previous pass.

Now your project is ready to finish.



RUST-OLEUM®

FORGET ABOUT MESSY VARNISHES!

Toss out those tins of varnish! Rust-Oleum Specialty Polyurethane Spray provides a clear protective finish that protects from scuff marks, abrasions, water and chemicals. Apply to wood or metal. Lasts twice as long as varnish. This interior product brings out the natural beauty of wood.

Now you can finish your project without mess or fuss, or annoying brush marks, drips and runs. Simply sand and wipe clean the surface and apply Rust-Oleum Polyurethane Spray for a durable, glossy finish.

Rust-Oleum products are available countrywide at Mica, Jack's Paint and selected hardware stores. Soon to be available in your local Builder's Warehouse.



Once you have mastered the method for making our Basic Box (see page 17), there are so many different ways to dress up, paint or decorate for the perfect gift. We have taken our basic box and added strips of bamboo to make a colourful container for your spring flowers.

for spring flowers!

You will need:

Bamboo stakes or 10mm pine dowels

Alcolin Wood Glue

Rust-Oleum Lacquer Spray - Red

TOOLS: Handsaw or jigsaw

Here's how:

1. Measure and then cut the bamboo stakes (or 10mm pine dowels) using a handsaw. Use 180-grit sandpaper to sand the edges smooth.
2. Apply Alcolin Wood Glue to the pieces, and arrange them on the box. Allow to dry.
3. Spray on two coats of Rust-Oleum Specialty Lacquer Spray for an ultra-hard finish. This product hardens to high lustre and is fast drying. Sand and re-coat for an even higher gloss finish.
4. Place a vase filled with fresh-cut flowers or a potted plant and saucer inside the box.

 RUST-OLEUM®

Buy countrywide
at Mica, Jack's
Paint and selected
hardware stores.



for girlie accessories!



Here's another unique idea for decorating your basic box - A colourful, painted container for all those small items of jewellery normally left lying around. We chose a Playgirl design for a fun element.

You can paint your box and design with any acrylic craft paint. Finish off with a coat or two of polyurethane varnish for extra protection. You can even add glittery details, gemstones, ribbons, etc.,





If you have an area in your garden that needs some attention, find inspiration here to help you turn it into a welcoming path. These homeowners levelled the ground of their side garden and punctuated the new design with a metal gate, plants, and creative stepping-stones. The affordable project transformed the space into a lush greenway that encourages daily use, which goes to show that you don't need to spend a lot to transform a section of your garden.

LEFT: An often neglected area of the garden, a small pathway that leads from the front to the back gardens.

Need more space!

If you want to create an abundant planting in a small area, make use of walls as well. Hanging baskets, arrangements of pots in varying heights, and wall mounted planters can be used to increase the amount of planting space.

No sun please!

In a south-facing area, keep an eye on how the sun reaches this spot at various times during the day. This will allow you to select a variety of plants according to their requirements for sun or shade.

Herbalicious!

If the area does receive sufficient morning or afternoon sun, this is also a nice area to have plantings of your favourite herbs, in pots, ready for picking for the kitchen.



up the garden path



Try this easy stepping-stone project on the next page, or click on the images below for even more inspiring Home-Dzine ideas for your garden.



decorative stepping stones

No building experience necessary for these easy stepping stones! A quick and easy project to make your own stepping stones for any garden path or walkway.

easy project



You will need:

- Piece of plastic to create a circle form. You could also use an old coffee tin, baking tray, or biscuit tin. Line these containers with Cling Wrap so that you can easily remove the concrete once set
- Pebbles
- Concrete mix
- Trowel
- Rubber gloves

Here's how:

1. Only mix up a sufficient amount of concrete for the amount of stones that you will be able to complete in approximately 15 - 20 minutes. The correct ratio of sand to cement is 2:1. The consistency of the mix is perfect if some mortar remains on the trowel when it is turned sideways. If the mixture is too slushy it will not form a strong stepping stone.

Mixing Tip:

Spread the sand in a layer 100 mm thick. Spread cement on top of this and mix the two thoroughly. Make a heap with the mix and make a hollow in the middle. Add water in small quantities and mix it in. Keep on adding and mixing in water until the consistence is like that of thin porridge.

2. Use the trowel to fill the form with cement. Press down to eliminate air pockets; use a float to level and smooth.
3. Wash pebbles to remove dirt. Press the stones into the cement while it is still wet, following the design of your choice. The pebbles should be pressed in so that they are level with the top surface.
4. Repeat the process of filling with mortar and pressing in pebbles for each stepping-stone.
5. Allow to set for 48 hours before removing the concrete form tubes.
6. Keep the concrete damp during the curing process (7 days). Once it has stiffened, either cover it with plastic sheeting that is held down firmly along its edges, or cover it with hessian or sacking that is kept wet.





Did you know?

Banana skins are rich in potassium and starch and are fantastic to feed your flowering shrubs and roses with. They will also improve the colour of many garden flowers.

Place them on top of the soil around your plants and dig them into the soil when they are dry.

If you can't bear the thought of banana skins lying around, dry them first and then crumble them around your plants.



The voracious mole cricket can destroy your lush green lawn before you're even aware that you have them. Not only that, these little buggers are almost impossible to pin down - ask me I've tried! (Janice)

Organic formulations containing natural pyrethrins will only work if the pesticide comes into direct contact with the cricket, which burrows deep down into the soil and comes up at night to feed, causing bare patches. Spray heavily at night and irrigate heavily afterwards.

Garlic spray is easy to make at home and is fantastic if sprayed regularly as a preventative control for fungal diseases as well as a deterrent for many insects like ants, aphids, beetles, snails, caterpillars and cabbage moths.

Juice; crush or grate about 100 grams of garlic cloves and mix with 1 teaspoons of paraffin. Let it stand for a few hours. Grate 80g green Sunlight soap or any oil based soap and dissolve it in 2.5 litres of hot water. Add the garlic, mixing thoroughly and allow to stand for one day. Strain well before spraying.

Plant Wild Garlic (*Tulbaghia fragrans*) to deter insect infestations. Another good natural insect repellent is Marigolds. Combine the two in a colourful planting and forget about bugs!



garden shed on wheels

If you're tired of lugging garden tools backwards and forwards? Our garden trolley is just what you need. Featuring a sturdy frame and a built in storage rack for garden tools, the oversized base can carry big loads to wherever you need them.

We made our garden trolley with PG Bison laminated pine shelving that is 22mm thick, and makes the unit sturdy, yet still affordable enough to make this a value for money project. In fact, the most expensive part of this project are the wheel. So if you have an old go-kart or golfing cart lying around somewhere, those old wheels will finally come in useful!

You will need:

- [2] 610 x 1800 x 22mm laminated pine shelving
- [1] 30 - 40mm diameter pine dowel
- [1] 10mm diameter threaded rod
- [4] 10mm diameter washers
- [2] 10mm diameter lock nuts
- 4 x 40mm wood screws
- 6 x 45mm wood screws
- Alcolin Waterproof Wood Glue
- Woodoc 50 Exterior Gloss Sealer
- TOOLS: Jigsaw, Drill, bits, countersink, 40 and 50mm diameter hole saws, multi-sander and 120- to 240-grit sanding pads, straightedge, tape measure, pencil, painting tools

Cutting list

- [1] 380 x 895mm - bottom
- [1] 530 x 895mm - back
- [2] 360 x 530mm - sides
- [1] 895mm - handle
- [2] 150 x 895mm - tool holders
- [2] 70 c 960mm - handle arms
- [2] 50 x 380mm - base supports



This project is brought to you by Woodoc

Here's how:

1. Cut all the sections with your jigsaw. There is no set design for cutting out the shape of the sides.
2. Use a 50mm diameter hole saw to put holes in the base to allow water drainage. You will also use the hole saw to create cut outs for tool handles and garden tools.
3. Mark and measure the position for [4] 50mm holes for tool handles and [3] 40mm holes for smaller garden tools - see main image. Use your jigsaw to extend the larger holes to create a 'U' shaped cut out in both tool holders.

DIY Tip:

Once you have cut all the pieces it is recommended that you sand and seal all the sections before assembly to ensure that the sealer is applied to all the surfaces.

4. Sand all the surfaces smooth with 120-grit sanding pads, and then finish off with a final sanding with 240-grit sanding pads. Give all the edges a slight 45-degree bevel with the sander to round off.

5. Use Woodoc 50 Exterior Gloss Sealer to seal and protect your garden trolley. This product is intended for application to wood exposed to harsh weather conditions and provides excellent UV protection and is water repellent.



Ensure that all the surfaces are clean and dry. Stir the product well before and during application. Apply the first coat liberally until the surface remains evenly glossy for at least 10 minutes after application. Pay particular attention to the end of the boards. Re-wet any dull areas. Once the first coat is hard dry, sand lightly with Woodoc SteelWool. You can now apply two more coats in the same way but do not sand after the third coat. Leave overnight to dry completely before assembling the project.

6. To assemble: All pieces are assembled using Alcolin Waterproof Wood Glue and screws. Connect the sides to the back - drill pilot holes through the back into the sides and countersink. Attach with wood screws. Connect the base to the sides and the back in the same way. Drill a 10mm hole at the bottom of each side to allow for insertion of the threaded rod. At each end of the threaded rod add [2] washers - the wheel - and lock nuts. Attach the [2] handle arms to the sides. Evenly space countersunk pilot holes along the length in a double row for added strength. Attach the handle to the handle arms with 6x45mm screws. Screw the tool holders to the sides, and the lower one to the top of the back. Finally, screw the [2] base supports underneath the base.



Q zone

Send your Q & A for decor, decorating and DIY dilemmas to home-dzine@iburst.co.za.

Q. via Timbercity

I have to paint a new supawood door that is the front to my dishwasher. What sealer do you recommend and do I apply to bare wood first and can I seal after painting? Existing doors are semi satin finish.

A. Janice

This door is going to need a little extra protection as it is in front of the washing machine, and could be subjected to moisture. I would recommend that you first apply a base coat of universal primer (white), sand down to a smooth finish with 400-grit sandpaper. Then paint on two coats of satin enamel in the existing colour. If you need to get the colour matched, you can do this at your local Prominent Paint or Decorating Centre.



Q. John

I would like to hang 9 small to medium-sized paintings as a square collage on the wall. Please could you provide advice/tips on correctly arranging the outer vertical and horizontal lines of the collage.

A. Janice

The easiest and most accurate way to hang a collection of pictures is to cut out shapes from newspaper to the same size as the various frame sizes. This process also makes marking for holes and heights much easier as well. To ensure that you get everything lined up - use a spirit level.

Q. Anon

Have recently rebuilt and restructured my kitchen. the worktops are bamboo and have been sealed with a polyurethane sealant. About a week ago a technician repairing the gas hob placed 2 hot objects from the hob direct on to the work top and left 2 very visible circular burn marks. Advice on a possible repair process will be welcome.

A. Janice

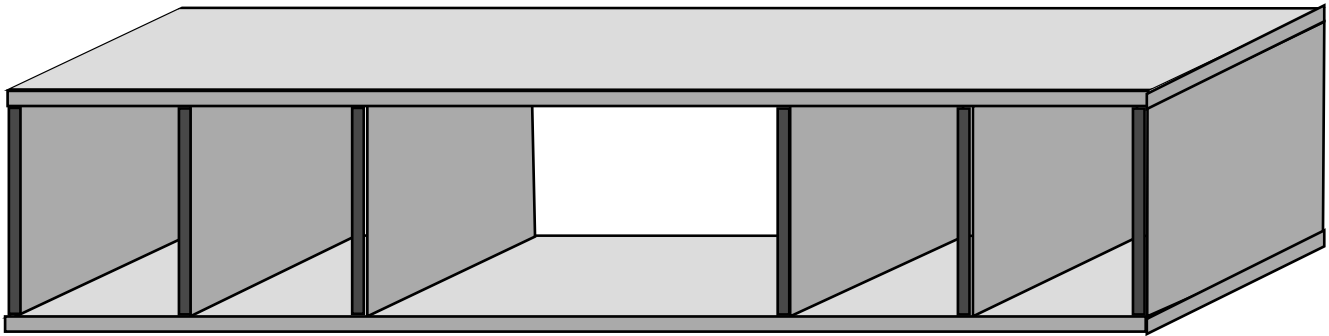
The only solution to your problem would be to sand down the bamboo countertop and re-apply polyurethane varnish to the surface. If the countertop is brand new, you might get away with only sanding the area where the burn marks are located, but problems might occur when it comes to getting a completely smooth surface when applying the new varnish.



Where to buy - Bamboo Countertops

www.pandabamboo.co.za
www.bamboodesigns.co.za
www.cabinetworks.co.za

WALL MOUNTED UNIT



CHUNKY FLOATING SHELF

All sections are glued and clamped. The opening needs to accommodate the 50 x 50mm pine support.



The sides need to be 16mm shorter than the actual width of the shelf to allow for insertion of the front panel.

BASE UNIT

