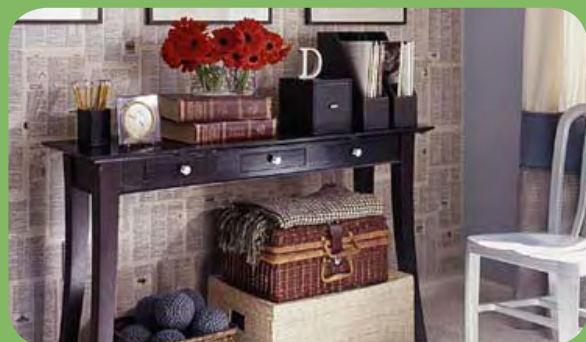




# Home-Dzine<sup>online</sup>

It's all about caring for and improving your home

November Issue 2



**countdown to Christmas**



and even more...  
easy decor ideas - inspired walls  
unique gifts to make - wood stain  
make a bar cabinet - cork walls



# a word or two

Nancy and I have just been having a good giggle at our appearance today on Lunch Box (SABC3). Even though I was wearing my highest platform shoes, I almost disappeared under the workbench! This was an experience we will always remember, not for the fact that we had a boo-boo the first time, but because it was so much fun!

We are both really looking forward to having our own DIY Divas show next year and, hopefully, we will get the sponsors onboard to assist us.

We have started to wind down our projects for this year but hope to be able to give you a bumper issue for December, so be sure not to miss that one. There will be only a single issue for December, but we will be back in full force for January 2009.

Until next month

*Janice*

Home-Dzine Online is written and compiled by Janice Anderssen. All projects in this issue, or any other issue, remain the property of Home-Dzine and Janice Anderssen, and may not be copied or reproduced in any manner whatsoever without written permission.

Feature credits:  
Meredith Publishing - do it yourself magazine  
ARA content  
The Family Handyman

# contents

linear sleep	3
These thin, widely spaced stripes make an orderly backdrop for candle sconces mounted on simple cube shelves.	
more than just floors	4
It is always good to be able to rely on a space that radiates comfort and relaxation.	
inspired walls	5
Define your room with wallpaper composed of dictionary pages, or create architectural features with a permanent marker.	
perfectly panelled	6
Use inexpensive supawood cut into long strips and to create a panelled look with crisp edges.	
quick & easy	9
open and shut	10
To bring a fresh breeze to your decor, place exterior shutters on the interior of a window.	
the gift of mosaic	11
Craft your own mosaic artwork with ceramic tiles and a framed mirror.	
bathroom storage cabinet	12
With the holidays just around the corner, and the possibility of guests staying over, here's an affordable cabinet to make.	
the spirit of christmas	14
Entertain your guests in true style with our bar cabinet.	
stylish lines	17
The silhouette-style legs of this coffee table are easy to cut with a jigsaw.	
diy home repairs	19
staining wood	20
Stain wood like a professional	
principles and myths of pest control	21
With organic living becoming a preference for health conscious individuals, 'going green' has received increased focus.	
instant art	22
The DIY Divas were recently honoured to be a part of the Sunday Sun and Home of Hope Mini Makeover, in association with Home Comforts.	
q-zone	23
directory	24

copyright of articles and images, not submitted and licensed by home-dzine or janice anderssen, remain the property of the owner, and home-dzine or janice anderssen claims no intellectual property rights.



# linear sleep

These thin, widely spaced stripes make an orderly backdrop for candle sconces mounted on simple cube shelves.

**You will need:**  
Light and dark  
UltraSheen  
Paint roller  
Tape measure  
Spirit level  
Masking tape  
Thin paintbrush  
Pencil

**PROMINENT**  
PAINTS



## Here's how:

1. Paint walls with the lighter of two colours and let dry.
2. Mark the spacing of the stripes, 50cm apart. Use a spirit level to draw vertical lines through your marks.
3. Apply masking tape along the vertical lines and press down with your fingernail to seal the edge.
4. Paint the wall the darker shade, let dry, and recoat.
5. Remove the tape, and touch up lines if necessary.

## DIY Tip:

Apply masking tape just outside any marked pencil lines. Run a fingernail along the tape for a tight bond. Then, use a thin paintbrush to apply water-based clear, matt glaze over the seam to seal it. It's OK to get glaze on the wall and the tape. Let dry to the touch.



In a day-to-day life that is more and more demanding, it is always good to be able to rely on a space that radiates comfort and relaxation. Dekwall cork wall solutions provide an alternative to conventional coverings and provide the welcoming environment that you see for your home.

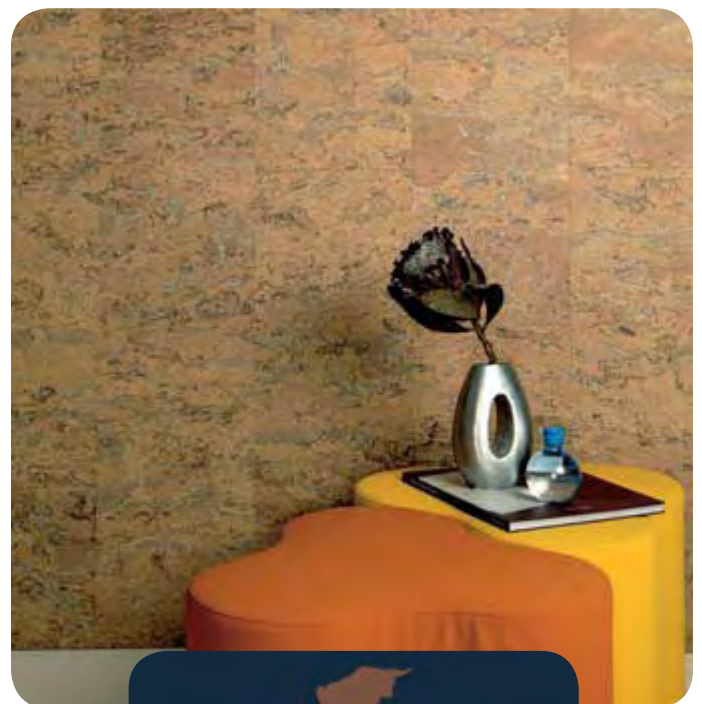
Fill each square meter with style and you'll be surprised at what your home still has to offer you.

## more than just floors

Dekwall by Wicanders is outstanding among wall coverings, combining the design of innovative textures and forms with all the comforts of cork. As a natural, ecological product, the entire Dekwall range provides first-class sound insulation, as well as being extremely easy to clean and decorative.

More and more townhouse and apartment homeowners are looking for ways to sound-proof their homes, to diminish unwanted noises from both inside and outside the home. In a home, most people consider noise to be just about any sound other than those made by what they are doing. For example, if a person is on the phone, they don't want to hear the television in the next room. Conversely, if a person is watching TV, they don't want to be able to hear the telephone conversation. Unfortunately, most walls and ceilings in today's homes are only marginally effective at blocking noise.

An easy and decorative solution towards reducing sound is to cork tiles to walls. This is because the gaseous elements that cork contains are sealed in tiny, impermeable compartments, insulated from each other by a moisture-resistant material. This endows cork with one of the best insulating capacities, both thermal and acoustic, of any natural substance.



# inspired walls

## Define your room with wallpaper composed of dictionary pages.

All you have to do is to cut pages from your book. Pour decoupage medium into a small dish. Working one page at a time, place the page into a plastic tray and use a narrow paintbrush to coat the back with the medium. Tip: If you want to leave a book undamaged, consider photocopying or printing favourite passages—but test the print to make sure decoupage medium doesn't smear the ink. Now position the page on the wall, and press flat to remove wrinkles and extra medium. Work from top to bottom on the wall, overlapping the pages if desired. Finish off with a thin coat of decoupage medium to seal your project.

great idea!

## Create your own architectural features with a permanent marker.

Draw the design on the wall, using a spirit level, straightedge, and pencil to lightly mark lines along the ceiling perimeter, then go over them with the marker. For a more formal look to this moulding, we added what appear to be dentils (a series of small rectangular blocks), drawing only two sides instead of three and spacing them slightly apart.

Measure all the walls and determine a logical length for a repeat pattern, such as the swags near the ceiling. Measure the length of the wall and divide it by the number of swags that you want to add, the result will be the length of each swag design. Draw pencil lines to mark the beginning and end of each repeat or swag, then fill in with flourishes.

For the wallpaper, create a grid using a spirit level, straight-edge, and pencil. Rather than drawing lines, mark points at equal intervals vertically and horizontally. Draw flowers at every other point in each row; stagger the designs in adjacent rows. There may be a little difference between each one, but that makes it more fun!

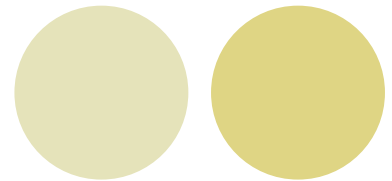


# perfectly panelled

Use inexpensive supawood cut into long strips and to create a panelled look with crisp edges.

## You will need:

Tape measure  
Spirit level  
Pencil  
Masking tape  
3mm supawood strips  
Alcolin MS37 adhesive  
2 of the same paint colours in a light and dark shade  
Paint roller and tray



**in a weekend**

## Here's how:

1. To determine the cut length for the supawood strips measure from the ceiling (or bottom of the cornice) to the top of the skirting.
2. Divide the width of the wall by 35cm and this will indicate how many 5cm strips you will need to cover the entire wall. Take this information along to your local Timbercity - who will cut the board into the desired number of strips.
3. To paint the wall, use the spirit level and straightedge to measure and mark a horizontal line approximately 50cm down from the ceiling or cornice.
4. Apply masking tape to the line to define the top section of the wall. Paint the wall above the tape with a light colour and let dry.
5. Paint the lower section in a darker shade from the same paint chip.

Paint the supawood strips to match the darker colour. Use Alcolin MS37 adhesive to attach the strips to the wall at 30cm intervals. To ensure good adhesion, use masking tape to temporarily hold the strips in position whilst the adhesive has time to dry.

## DIY Tip:

As you plot out strip spacing, start at the centre of a focal point wall or over the centre of a door or window, and work your way out. Avoid lining up the strips with the edges of doors, windows, or walls. Make up for too little or too much space by fudging the distance between laths at the corners.

## TIMBERCITY

**For all your cutting, edging, hardware, timber and board**

# affordable alternative

Today's on-the-go homeowner demands furniture that performs double duty to provide high function without sacrificing style. Families are calling for quality and casual trends that can resonate for years to come, all at affordable prices.

Thoughtful splashes needn't cost thousands: Consider accessorising rather than renovating. Low-cost, easy changes can enhance a home's value and the pleasure in revelling in a unique and personal living space.

Many people often forget that new window treatments are the quickest fix for a room. They provide texture and an instant face lift. Layering throws and pillows adds depth and comfort, and brightening a dining room with crisp table linens and stately candle accessories adds a touch of refined class. Of course, a simple fresh coat of paint can both cleanse and colour any room.

When purchasing furniture, look for pieces with hidden features that enhance value. Think



lamps with adjustable height, nightstands and mirrors with built-in power strips for recharging those handheld devices, and dining-room tables with drawers to neatly house placemats, napkins and other accessories.

Homeowners don't need to spend a fortune to enliven their living space. Adding or changing accessories and other small touches can certainly make a refreshing difference.

Here are some more ways to refresh a room:

- Reframe photos: Attractive, well-made frames not only add class to a space but place special attention on precious memories.
- Small punches of colour via an area rug - whether on a hardwood floor or low-pile carpet - add interest to any space.
- Simply re-arranging furniture makes for a whole new room.
- Eliminate clutter: A room can appear much larger - and more sophisticated - utilising smart solutions like a storage ottoman.
- Bring the outdoors in: Plants and other greenery infuse instant life.





*for chicks who want to learn the tricks!*

## **NEW COURSES FOR ALL OUR DIY DIVAS**



### **Home Repairs & Emergencies**

Forget about that unreliable handyman, or overpriced contractor, we show you how to tackle your own home repairs and minor emergencies.



### **Be Your Own Interior Designer**

It isn't always easy to get the look that you want in your home. What colours work best and why? How do you create the perfect look? We show you the basic steps in putting together and creating stunning interiors.



### **Wood Finishes & Reupholstery**

Techniques to transform wood into stunning reproduction pieces. Easy reupholstery techniques.

## **MIDDELBURG & DURBAN WE'RE HEADING YOUR WAY!**

### **DO-IT-YOURSELF DESIGN & DECORATE WEEKEND**

How to use power tools with our 'hands-on' approach  
The techniques used in woodworking and DIY projects  
Basic principles of interior design - colour, planning, arrangements, etc  
Paint tips and techniques  
How to do your own reupholstery  
Wood finishing tips  
Home Repairs and Improvement

#### **MIDDELBURG**

Date: 17 & 18 January 2009  
Venue: Pienaar Dam, Middelburg

#### **DURBAN**

Date: 24 & 25 January 2009  
Venue: Durban Central - to be confirmed

# quick & easy

## Pretty Panels

Accent white walls with panels painted in rich, bold colours. If you're hesitant to paint an entire room in a bright colour or if you rent and aren't allowed to paint the walls (without sacrificing your deposit), try this. We used hollow-core closet doors found at a home improvement centre. Paint each one with primer; let dry. Tape off sections for each colour and paint one hue at a time. The result? Bright, colourfully patterned pieces that accent any room in the house.



## Industrial-Chic Curtain Rods

The hardware store yielded the chains and galvanized-steel conduit pipe used to hang these draperies. Elbow connectors allow the 90-degree turn needed to drop the "rods" from mounting plates screwed into anchors in the ceiling.



## Rounded-off Storage

Today's plastic paint tins are perfect for quick and easy storage in the bathroom. Use a suitable primer for plastic and paint a selection of empty paint tins in a colour to compliment your bathroom. Use small wall plugs and screws to attach these to the bathroom wall and... voila! Instant storage.





# open and shut

To bring a fresh breeze to your decor, place exterior shutters on the interior of a window.

To give shutters the look of well-worn architectural salvage, apply Krylon Crackle Finish. Mount the shutters to the window frame with offset hinges that allow the shutters to swing fully open or closed.

A crackle finish mimics the look of paint that seems to have cracked over the years, allowing other colours to peek through. This is a popular rustic finish for walls, cabinets, and furniture.

## You will need:

Exterior shutters or pine louvre panels  
Krylon crackle finish  
paintbrush, sponge, or roller  
Drop cloth

## Here's how:

1. Apply a base coat of paint in the colour that you want to show through the cracks. Let dry.
2. Apply a coat of crackle medium. Allow the medium to cure, following the manufacturer's instructions.
3. Apply a top coat of paint with a paintbrush, sponge, or roller. For large furniture pieces or expanses of wall, this process is easier if you have a helper and can break the job into sections that you quickly cover with crackle

and paint. You'll see the finish crackle as the top coat goes on. Work quickly and don't recoat, which can disturb the crackle.

4. Allow the paint to dry at least eight hours, then apply a coat of water-base polyurethane to protect the finish, if desired.



Krylon products are available countrywide through Builders Warehouse, Builders Express, Mica, Jacks Paint, Kings Hardware, DIY Depot, and Arts & Crafts and Scrapbooking Stores.



# the gift of mosaic

gift idea

## Here's how:

1. Draw your basic design on the mirror frame. Use this basic sketch to get an idea of the pieces you will need.



2. Use a tile nipper to score and then cut ceramic plates and tiles to the shapes and size you need.



3. Arrange the cut pieces over your sketched design. Attach the pieces using a water-base adhesive. Let adhesive dry overnight.



4. Mix grout with water until creamy. Use a spatula to spread grout across the frame.



5. Remove excess grout with a damp sponge. After a few minutes, polish with a soft dry cloth to wipe off any remaining grout.

Craft your own mosaic artwork with ceramic tiles and a framed mirror. This simple mosaic technique works on any item with a flat surface. For a mirror, choose a base sturdy enough to bear the weight of the ceramic and grout.

### You will need:

Mirror  
12mm Supawood  
Ceramic plates, tiles, jewellery, or other items to use in the mosaic design  
Tile nipper  
Alcolin Flexi Tile  
White grout mix  
Bucket  
Spatula  
Gloves  
Sponge  
Soft dry cloth

With the holidays just around the corner, and the possibility of guests staying over, here's an affordable cabinet to make that will ensure you have plenty of storage for towels and bathroom essentials.

Assembled using pre-cut and edged BisonLam in Super White, the project only takes approximately two hours from start to finish, and you have a super-stylish storage cabinet for all your bathroom essentials.

#### You will need:

16mm PG Bison BisonLam – Super White. Have all your boards cut and edged at your local Timbercity. You will also need to have holes cut for the hinges – see Point 5 below.

[2] 400 x 400mm – top and bottom

[2] 400 x 1900mm - sides

[1] 400 x 1932mm - door

[4] 368 x 400mm x 12mm

Supawood – shelves

[1] 396 x 1928mm Masonite backing board - white

[1] 1m of 50 x 50mm pine - legs

[24] Adjustable shelf supports

[3] Hinges – full overlap and screws

Wood screws

Alcolin Contact Adhesive

Alcolin Fast Set Wood Glue

[6] 150 x 150mm mirrors

[1] Handle

TOOLS: Drill/Driver, screwdriver and drill bits, Bosch Tacker or staple gun, Bosch Multifisander or sanding paper, Tape measure and pencil

**easy project**

#### ***Towels and accessories provided by Home Comforts***

#### **Here's how:**

1. Lay out all the pieces on a flat level surface. Drill pilot holes through the base and top into the sides, and countersink. Screw the base and the top to the sides.



## **Bathroom Storage Cabinet**

**Now you can afford to get your bathroom organised with this easy project!**

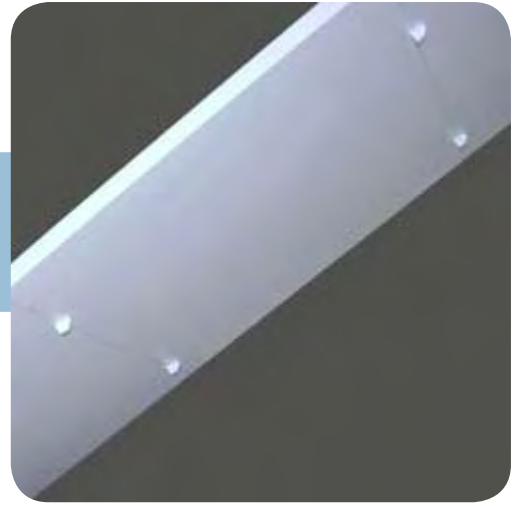


- Depending upon how many shelves you require, measure and mark equal measurements down the left and right of each side. Drill to a depth of 6mm with a 6mm drill bit. These holes are for the adjustable shelf holders.

**DIY Tip:**

**Use a piece of masking tape wrapped around the drill bit to indicate the depth of the hole to be drilled.**

- Apply the white masonite board face down on the back of the cupboard. Use a Bosch Tacker or staple gun to fasten the masonite to the back of the cupboard at the sides, top and bottom.
- From the 50mm x 50mm pine, cut [4] sections of 50mm height for the legs. Use a Bosch Multisander or sanding paper of 180-grit to sand the tops, bottoms and smooth all the edges. Apply a bead of wood glue to the tops of all the legs and use [4] screws to attach the legs to the base of the cabinet.



- Have your local Timbercity cut out holes for the three hinges. Screw the hinges onto the back of the door in the cut holes.

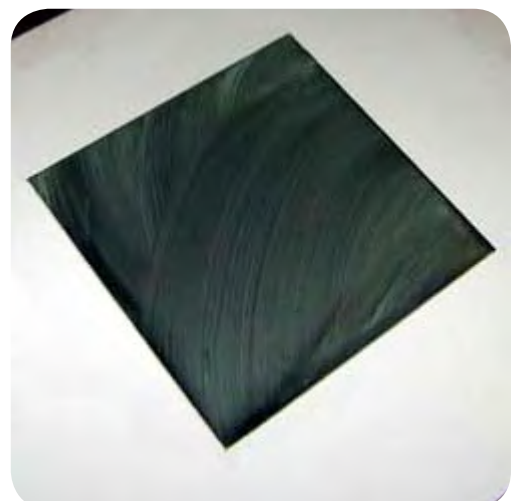


**DIY Tip:**

**Have someone hold the door while you mark positions for holes for hinges on the inside of cabinet frame. Screw hinges to the frame and make any adjustments to hinges for a flush fit.**

- Use a straightedge to position the mirror tiles at an equal distance and centrally down the center of the door panel. Use a pencil to mark around the mirrors and place aside. Apply Alcolin Contact Adhesive to the front of the door, where marked, and to the back of the mirror tiles. Leave to cure until no longer tacky, and then carefully position the mirror tiles onto the door.

- Attach the handle, move into position, and start filling up with your towels, toiletries or bathroom essentials.



# the spirit of christmas

Entertain your guests in true style with our bar cabinet.

There is plenty of room to store your glasses, accessories, drinkie poos and cold drinks, and more. And I've added a pull-out shelf so that you can easily mix and pour drinks on the spot.



Don't be put off by the size of the cutting list. Your local Timbercity will be able to cut and edge everything you need for this project. Assembly is not as difficult as you may think and... the end result is stunning!

All glasses and accessories available at

 Home Comforts  
Ackermans



## You will need:

- 16mm Melawood – African Wenge
- [1] x 400 x 800 – Top
- [2] x 400 x 1400 – side
- [2] x 400 x 768 – shelf
- [2] x 500 x 800 – base top/bottom
- [1] x 60 x 800 – base front
- [4] 91 x 400 – door top/bottom
- [4] x 91 x 1376 – door side
- [8] 90 x 368 – door shelf front/bottom
- [2] 400 x 1432 – door front
- [1] Length of 20 x 100mm pine for corner brackets
- [6] angle brackets
- Alcolin MS37 adhesive
- [1] 796 x 1396 Masonite backing board
- [6] 100 x 1432 – 9mm Supawood or Perspex shelf front
- [6] 85 x 1432 – 9mm Supawood or Perspex shelf bottom
- Edging strip
- [4] hinges
- [8] Shelf pins
- Wood screws (6 x
- TOOLS: Drill/Driver 5mm drill bit, countersink, steel triangle, tape measure, pencil, Woodoc 10 Sealer and stain concentrate, paintbrush

OPTIONAL: Perspex panel, jigsaw

## Here's how:

1. Start by assembling the base. Use angle brackets and MS37 adhesive to attach the sides to the top of the base (see top pic right). To attach the bottom of the base, drill pilot holes through the base and up into the sides, countersink, and apply a thin bead of MS37 adhesive. Screw the bottom of the base onto the sides.
  2. Assemble the main cabinet. Lay the back of the cabinet on a level surface. If you don't have an extra pair of hands to assist, use corner clamps to position a side and the base of the cabinet so that it rests on top of the back, making sure that all the sides are flush (see pic 2). Cut [4] corner brackets from a length of pine. Use a steel triangle to ensure that your angles are perfect. Screw the corner brackets to the back of the cabinet and to the side and bottom. Repeat for the other side and top of the cabinet.
  3. Turn the cabinet over. Drill pilot holes 6mm in from the edge around the back, countersink and reinforce the back by screwing into the top, sides and bottom of the cabinet.
  4. Optional Perspex panel. If you are going to insert a Perspex panel in the doors, use a jigsaw to cut out an opening to size in both door fronts. Finish off the opening with edging trim.
  5. Lay the front of the door on its side on a level surface. Butt the edge of one side against the back of the front panel and drill pilot holes 6mm in at either end - through the door front into the side piece; countersink. Screw the front to the side and repeat this for the other side. Butt the top and then the bottom pieces to the back of the front panel and attach in the same way. Use black screw caps to cover the screws visible in the front of the door.
- Note: If you are using the Perspex panel, Insert the Perspex sheet between the front door, the sides, top and bottom before screwing everything together.**
6. Proceed to assemble the second door in exactly the same way.
  7. Attach the doors to the cabinet with brass hinges. Check that both doors sit flush on the cabinet and meet nicely in the middle. Make any necessary adjustments.
  8. Measure and mark down inside the cabinet as to where you want to position the shelves. The cabinet featured has two fixed shelves and a pull-out shelf. The fixed shelves are supported on shelf pins. For the pull-out shelf we have used a 20mm aluminium track cut to size and screwed to the sides, that allows the shelf to slide in and out. We also cut a piece of channelling for the front of the shelf and attached with Alcolin MS37 adhesive.



## Bond with us!

With a Virgin Money Home Loan you will be left with more cash in your pocket, immediate answers, no hidden fees and you can pay off your home loan in 30 years.

For more information on the Virgin Money Home Loan

[click here.](#)



www.virginmoney.co.za

Terms and conditions apply. Virgin Money South Africa (Pty) Ltd. Supported by Absa Bank Ltd, Reg nr 1986/004794/06. An authorized financial services provider. Registered Credit Provider, Reg nr. NCRCP7.

9. Use 4 x 20mm wood screws to attach the shelf bottoms to the inside of the door frame. Mark and measure down the outside of the door for the position of your shelves. Drill pilot holes and countersink. Partially drive the screw through the door side so that only the tip of the screw protrudes through the wood. Hold the shelf into position and tighten the screw slightly to mark the edge of the shelf. Remove the shelf and drill pilot holes. Reposition the shelf and screw into place. The shelf front is screwed onto the front of the shelf bottom and the sides of the door.

### Finishing

- Stain the corner brackets with a woodoc stain and sealer to match your choice of MelaWood. Cover all visible screw heads with plastic screw caps.
- Decorate the inside back of the cabinet with mirrors to add glitz and glamour to your bar cabinet.
- Choose decorative handles for the doors of the cabinet.

Now it's time to P.A.R.T.Y !

Project designed and owned by Janice Anderssen - DIY Diva

# TIMBERCITY



# stylish lines

The silhouette-style legs of this coffee table are easy to cut with a jigsaw.

They say that "Practice makes perfect," so unpack the jigsaw and start practicing!

## You will need:

18mm Supawood (cutting list at back)

Wood glue

6mm wood screws

Panel pins

Alcolin 'Professional' wood glue

Alcolin wood filler

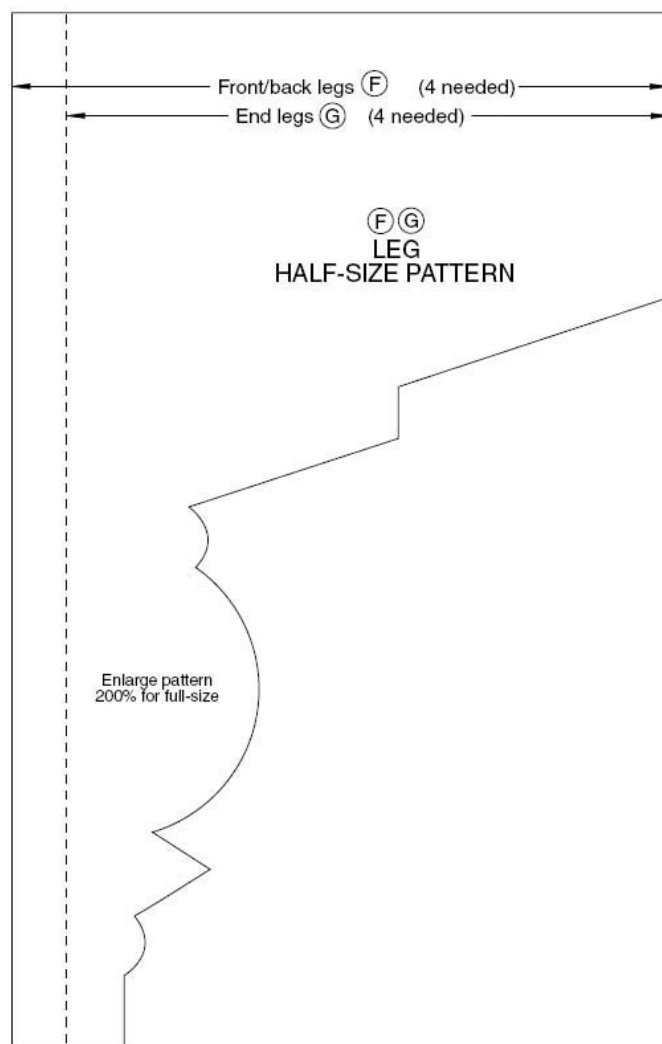
Prominent Sheen paint in choice of colour

Prominent Universal Undercoat

**TOOLS:** Tape measure, steel angle square, mitre box and saw, clamps, jigsaw, drill/driver with bits and countersink, hammer, putty knife, sanding block with 180-grit sandpaper, paintbrushes, foam roller and paint tray

## Here's how:

1. Set the top upside down on a pair of sawhorses and mark the layout lines where the cleats (B & C) and aprons (D & E) will attach. Note that the top will overhang the aprons 40mm along each edge.
2. Use the mitre box and saw to cut all the cleats to length and drill countersunk holes for screws. Centre the cleats along their respective edges - short cleats at the short edges and the long cleats at the long edges - and attach them with a bead of wood glue and screws.
3. Arrange the short and long aprons into a frame on the floor or on your workbench. Drill pilot holes near the ends of the long aprons and then connect the corners with wood glue and panel pins; be sure to fit the ends of the short aprons against the inside faces of the long aprons. Test fit the assembled apron frame onto the underside of the tabletop, ensuring that it fits securely around the cleats.





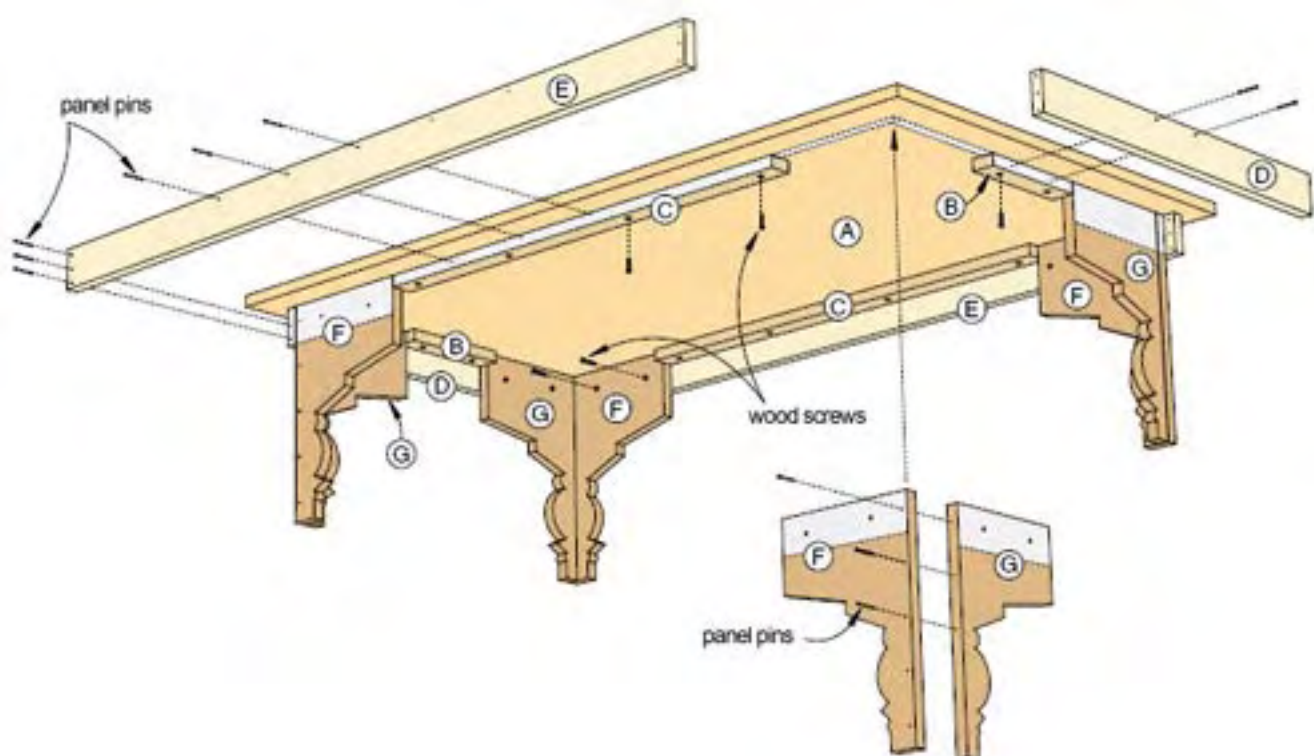
4. Remove, apply glue where the apron edges will attach to the tabletop, then clamp the apron frame to the tabletop. For good measure, drill a few pilot holes and drive panel pins through the aprons into the cleat edges. Let this assembly sit while you work on the legs.

5. Each leg consists of two segments (F, G) with matching patterns that together resemble the profile of a turned leg. It's easier to assemble the leg sections before cutting the contoured edges with the jigsaw; connect them with a glued and nailed butt joint as shown. Be sure to fit the edge of the narrower (end) segment against the inside face of the wider (front/back) segment.

6. Enlarge and transfer the pattern for the leg (at back), onto your leg assemblies and cut each with the jigsaw. Lightly sand the edges.

7. Drill countersunk holes into the inside faces, near the upper ends. Apply wood glue to the inside apron areas and attach the leg assemblies with screws.

8. Fill all nail holes with wood filler. Sand the filler flush after it dries. Apply Prominent Universal Primer to all surfaces. Let the primer dry thoroughly, then apply two coats of sheen paint.



# diy home repairs

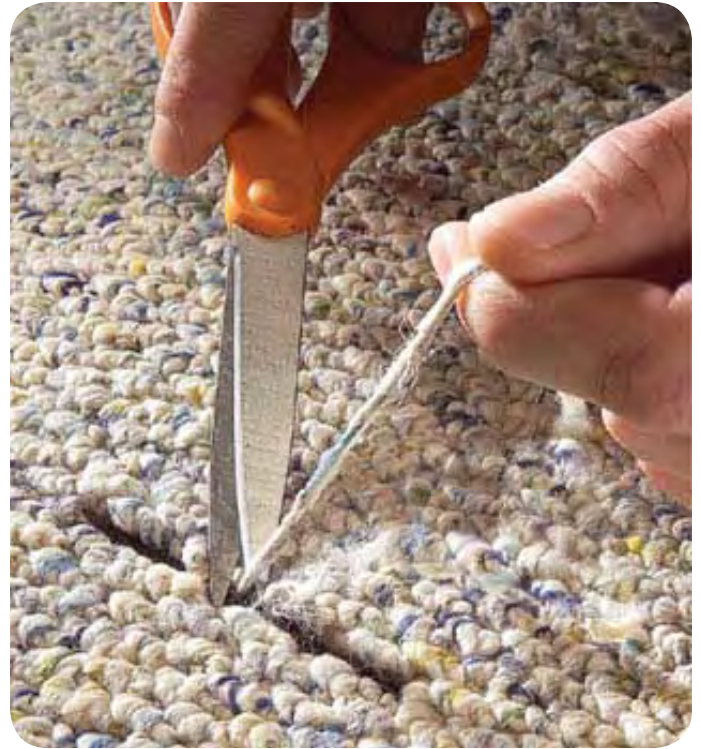
## Fix a snagged carpet

To fix a running snag in carpet with woven loops, you'll need scissors, a small screwdriver and multi-purpose adhesive.

First, cut out the snagged yarn (see pic). Then run masking tape along both sides of the snag to protect the carpet from overspill.

Carefully squeeze a heavy bead of adhesive into the run. Use a screwdriver to press the remove piece of yarn into the gap.

Remove the masking tape and leave to dry.



## Touch up kit

Most of us leave nicks and scratches in paint for months because fixing them is such a nuisance. Here's how to make it so convenient that you'll immediately touch up accidents right after they occur:

Pick up cosmetics applicators and small airtight containers at any discount store. When using paint for projects around the home, keep a small amount of each paint colour in the airtight containers. Label each one and you've got a handy touch-up kit that helps you make repairs in seconds.

## Standby decorator

Every homeowner ought to have a box filled with scraps and samples left over from decorating and remodeling projects.

When shopping for a new sofa, you can pull out the carpet, wallpaper and drapery samples and take them along. For home improvements and repairs, you'll have moulding scraps, paint chips and flooring samples to help you find matching materials. Keep spare hardware in the box too, in case you need replacements.



# stain like a pro

When using a stain concentrate to stain wood, the more coats applied - the darker the colour. Whilst most colours can be achieved with three coats, it is sometimes necessary to apply more coats for a deeper, richer colour.

I have discovered an easy way to determine the colour that I want, and that is to use a scrap piece - or offcut - of wood that is split into segments. Each segment receives a certain number of coats and the final result will ensure that I get the perfect colour when matching to other projects, or furniture that I need to match.

## Here's how to stain for the perfect colour combination:

1. Mix a 20ml Woodoc Stain Concentrate in a one litre tin of clear Woodoc Sealer. Stir thoroughly to ensure that the stain and sealer are mixed well together. It is also important to stir before use and to stir regular during use to keep the mix consistent.
2. Make up a test board with your chosen sealer concentration. Then stain the entire board. Let it dry and add a second layer of stain to all but one section. Continue in this way until you have a board that is stained in three to four coats of stain, or until you get to the desired colour depth.

### DIY Tip:

It is important to wait for each layer to dry before adding the next coat.

### How to achieve a high gloss shine

If you want your finished project to feel silky-smooth and have a high gloss shine, have plenty of Woodoc SteelWool on hand.



After each coat has dried use the steel wool to lightly sand the surface - remembering to go with the grain of the wood. This process removes any sticky residue that is left behind by the stain/sealer and allows the next coat to be absorbed by the wood.



DIY Divas in the wood finishing class



# principles and myths of pest control

With organic living becoming a preference for health conscious individuals, 'going green' and living closer to nature has received increased focus.

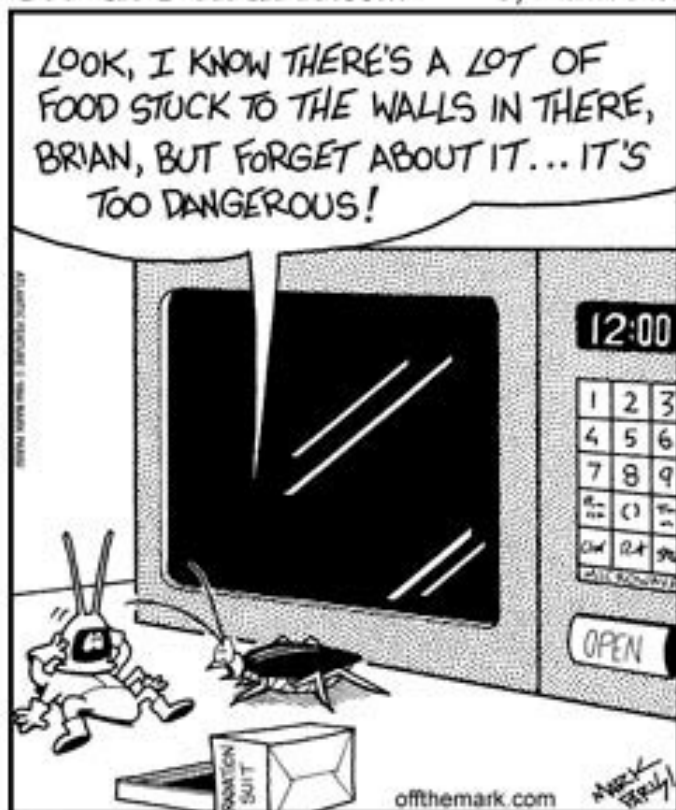
"The shift from a chemical way of living is perceived to be more wholesome, but it's not always the answer", says Deena Govender, Quality Assurance Manager from Rentokil. "Increased climate changes amongst other elements, influence our direct environment in ways that could potentially be detrimental to our health. A very common, but sometimes underestimated element is pest infestation in our home environment. Any living organism that is harmful to man, his/her belongings or his/her environment, is classified as a pest."



A vast majority of home owners shy away from dealing with pests due to its unpleasantness and unhygienic nature. As a result, problems that arise from pests are usually cured or treated rather than prevented. Getting to the route of pest infestation, involves more than identifying the attraction. The source needs to be treated, rather than the symptoms of the problem. This takes a lot of skill and experience in the field of pest control. "Contrary to popular belief, the use of pesticides are restrictive and only used when necessary. It is critical for individuals who employ pest control companies to make sure that the pesticides they use are from an approved list; hence bio-degradable. We work closely with the Department of Agriculture and our international team from the UK, to ensure utmost safety. Treatment should be target specific and therefore more effective with minimal secondary effects", says Govender.

Over the years, many myths have been established concerning pest control and the use of pesticides. Govender answered a few questions around myths and pesticides: There exists the common belief that electronic pest control systems are the most effective. "Our own research in the Rentokil UK laboratory and infield experience has shown us that electronic equipment does not work. We have actually seen cockroaches living inside these units. These units are only effective when combined with proper management programs."

off the mark.com by Mark Parisi



On the flip side, there are individuals who think that stronger poison produces better results. "This is often a waste of money and pesticide. It also poses a greater hazard to the user and the environment".

Cockroaches are clean insects, therefore only live in clean spaces. "They are scavengers and will live in all types of environments. They are often found in sewers and hospitals. Thus, they are able to contaminate clean surfaces by the pathogens that they carry from infected materials found in those environments." Keeping your home clean, will stop you from having pests. "Pests can walk, fly or be brought into any building at any time. They can enter with infested goods, from your neighbours, or your surrounding environment."

All pest control treatments are the same. "No. Treatment will depend on the expertise and experience of the pest control technician and the company he/she represents."

Pests are natural organisms, and should therefore not be killed. "The law recognizes the dangers posed by some household pests, hence allows their destruction. Pests can carry many dangerous diseases that can adversely affect man and his pets. It is partly our vision to protect man and pets from any harmful organisms, and to maintain clean environments. "



The DIY Divas were recently honoured to be a part of the Sunday Sun and Home of Hope Mini Makeover, in association with Home Comforts.

We were unable to find colourful artwork to use in our makeover, but we did come across some fabric that would match perfectly. So we bought three affordable canvas pictures, some Bostik sprayable adhesive, and the fabric. The rest was easy... And we ended up with three unique works of art that were ideal for our room setting!

If you need 'art' for walls in your home, this is the most affordable and easy way to get that perfect colour match.

## instant art

1. Cut a piece of fabric that is large enough to cover the frame and be tucked at the back.



2. Iron the fabric to remove any creases. Place face down on a level surface.

3. Spray the front and sides of the artwork with Bostik Sprayable Adhesive.



4. Position the artwork centrally on the square of fabric. Turn over and smooth out any creases - work from the centre to the sides to prevent air bubbles.

5. Turn the fabric over the sides and tuck down. Use a Bosch Tacker or staple gun to affix to the back of the frame.



# Q zone

Send your Q & A for decor, decorating and DIY dilemmas to [home-dzine@iburst.co.za](mailto:home-dzine@iburst.co.za).

## Q. Francois

I'm 28 years old, single, a bachelor living in my own house and I am in dire need of some advice on home improvements. I love DIY-ing, so I tend to try and do things myself.

You see, I bought my dad's house when they moved to Plettenberg Bay (I'm in the Northern Suburbs of Cape Town) and my house was/is still our family home when they come down to Cape Town, so it obviously has that family feeling to it, but I'm trying to put my personal touch on it.

I really want to improve all areas of my house, but my first project would definitely have to be my bedroom with en-suite.

I really love your website and all the articles but to be honest you don't really cater for young bachelors. :) Any ideas/advice for me?

## A. Janice

I am so sorry that you don't feel we provide enough ideas for bachelors. We do try to put across a contemporary feel as much as possible, which works for young trendy homeowners. Decorating a bedroom, whether male or female, is basically the same. It is the colours and accessories that make the difference.

I have previously done articles on a bedroom with a male touch to it and the emphasis was on casual elegance. The foundation is to work within the colours that you like - preferably strong colours - and combine leather and dark wood to the look:

The main feature of the bedroom should be the headboard - upholstered in leather (or faux leather) in a colour to compliment those colours chosen for the walls, and then take one or two of the bedroom colours into the en-suite.

Flooring options for a bachelor bedroom would be laminate wood, bamboo or cork. We don't want our bachelors having to run around in a frilly apron vacuuming the carpets! If your budget allows, add bamboo or cork flooring to the en-suite.

Keep window treatments plain and simple, and match the colours to those already in the room.

I hope that this inspires you a little!

## Q. Pam

Hi, how do I go about resealing a very old bath? I presume it is an enamel one from the 50's which has now worn through and is hard to clean as it is not an even surface anymore?

## A. Janice

There are companies that do restoration or resurfacing of these types of bath tubs ([www.mendabath.com](http://www.mendabath.com)). There are also DIY products on the market that you can use, but be careful as these are not always great and the surface can still be scratched which, as a DIY project, is not covered by any guarantee.

## Comment from Rust-Oleum

Janice is right in what she advised. Some products peel and scratch only after a couple of uses but the Rust-Oleum Tub & Tile has been tested and retested and after 50 uses still holds strong without scratching.

It is an acrylic epoxy and will bond with ceramics, porcelain and fiberglass. Preparation will be the most important factor in correctly and effectively recoating your old bath.

The product comes in a kit and a couple of additional tools will be required (advised on the box). The entire kit will cover an average size bath, toilet and basin. It comes in white, biscuit and almond colours.



## Q. Swaleha

I was wondering if you might be able to help me. I would like to buy Papier mache to mould into something. Can you suggest where I might be able to buy it?

## A. Janice

I am not sure if you can buy papier mache, but it is very easy to make your own. All you need are some thin strips of newspaper and a creamy mixture of flour and water. Cover the strips in the paste and use these to mould. The end result is hard and you can sand it smooth once it is completely dry.

Hope that helps!

## Links for this issue

- Bosch Power Tools for DIY
- Decorating Centre
- Dremel MultiTools
- Garden Shop
- Home Comforts
- PG Bison
- Prominent Paints
- Rust-Oleum
- Timbercity
- Woodoc



**Need a back-issue of Home-Dzine Online?**

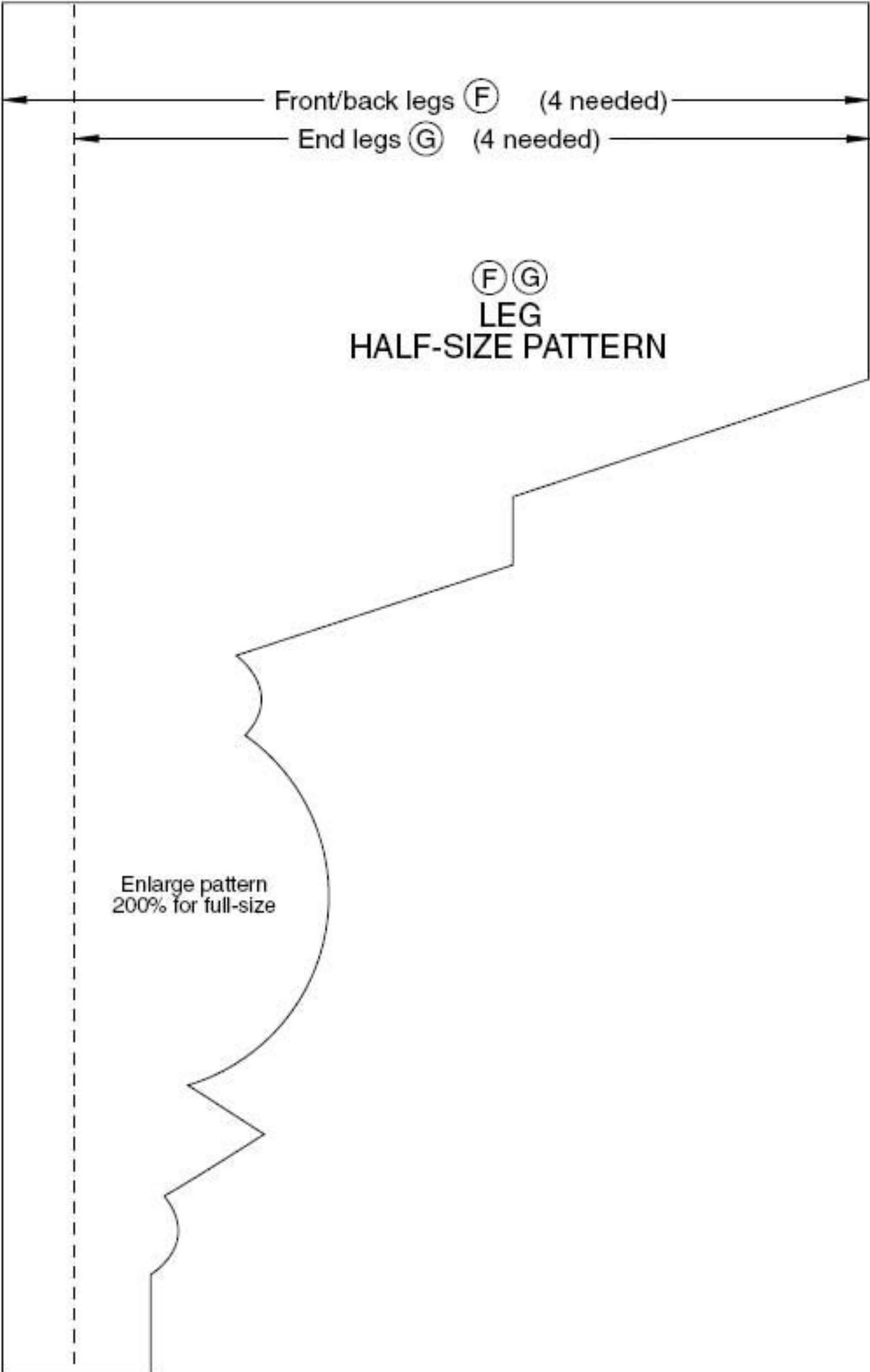
**CLICK HERE**

**Want to subscribe?**

**CLICK HERE**

**Need to send us an email?**

**CLICK HERE**



Front/back legs (F) (4 needed)

End legs (G) (4 needed)

(F) (G)  
LEG  
HALF-SIZE PATTERN

Enlarge pattern  
200% for full-size