



Home-Dzine^{online}

It's all about caring for and improving your home

August Issue 2

go green for spring



and even more...
stripping floor tiles - an illusion of space
designer bed to make - easy bathroom cabinet
elegant chandelier - kiddies alphabet desk



a word or two

My apologies for the lateness of this issue. With my son being recently involved in a serious car accident, I now find myself running around trying to get everything done! All I can say is thank goodness he is alive.

Nancy and I have been extremely busy of late and have managed to complete quite a few projects - both large and small - for the magazine and other publications.

Something exciting to mention.... We have been asked to compile a DIY book. This is going to be lots of fun, and tons of hard work. We want to create some really unique, yet practical and affordable projects that anyone will be able to do. Will keep you posted on the developments.

A note on DIY Diva Workshops in Cape Town and Durban. The facilities that we originally had lined up have now fallen through and we are battling to find a suitable venue that doesn't cost an arm and a leg and where we can make as much mess as we like. If anyone out there has any suggestions in this regard, please let us know.

Until next month

Janice

Home-Dzine Online is written and compiled by Janice Anderssen. All projects in this issue, or any other issue, remain the property of Home-Dzine and Janice Anderssen, and may not be copied or reproduced in any manner whatsoever without written permission.

contents

it's just an illusion	3
When it comes to townhouse living, rental apartments, and flats the paint colour you use on the walls can effectively make a small space appear more roomy.	
go green for spring	5
No other colour in the spectrum is as soothing or relaxing as green. But this colour can totally overwhelm a space if not used carefully.	
products we love	7
elegant chandelier	9
Having searched everywhere for a black chandelier at an affordable price and coming up empty handed, I decided to try and make my own.	
affordable bathroom cabinet	11
This easy bathroom cabinet requires no special tools and can be assembled in 2 hours tops!	
cute alphabet desk	13
This kiddies table and chair is easy to make and requires no special tools or materials.	
doing it for yourself	16
With so many people opting for the do-it-yourself route in an attempt to save money - or as a means of expressing their creativity - it helps to bear in mind that while you will definitely save money, you should be aware of the pros and cons before you start.	
how to hang a door	17
Although timber or hollow-core doors are supplied in standard sizes, almost all doors have to be trimmed to fit the opening.	
make your own bed	19
Simple, streamlined shapes are as popular as ever in furniture design. This low-lying bed comprises only the essential components and allows a standard double mattress.	
garden talk	21
Seedlings have many functions in a garden. They are most commonly used to add splashes of colour to a garden and sometimes as cut flowers.	
the right tool for the job	22
When trees need to be trimmed to prevent them from encroaching on a neighbour's property, or because they become overgrown, the tool to have for this job is the Bosch All Purpose Saw.	
q-zone	23
directory	24
copyright of articles and images, not submitted and licensed by home-dzine or janice anderssen, remain the property of the owner, and home-dzine or janice anderssen claims no intellectual property rights.	

it's just an illusion

When it comes to townhouse living, rental apartments, and flats the paint colour you use on the walls can effectively make a small space appear more roomy.

When it comes to making improvements in a rental property, paint offers an affordable way to recreate your space. Not only is it easy to change when you tire of the colour, or feel like something different, walls can easily be restored to their original condition when the time comes to leave or move on. And with this in mind, an accent wall is the ideal way to make your small flat feel like a palace.

Create an Accent or Feature Wall

A great way to make a room feel bigger and create a sense of space is to create one stunning accent wall. An accent wall is exactly what the name implies – a wall painted a different colour than the rest of the walls.

RIGHT: There are many ways other than paint to create an accent wall. Wallpaper with bold horizontal stripes gives this room the illusion of width. Likewise, in rooms with a low ceiling, vertical stripes would draw the eye upward and create the illusion of height. As an alternative to wallpaper, use large canvas art on the accent wall.



ABOVE: Use a light and dark shade of the same colour to create a checkered feature wall.

CREATE THE LOOK

For this project we used Prominent Paints Matt - Bushland 4724-G99Y. Divide the paint in half and add white to one section, to create a lighter shade - mix well.

Mark off the wall into sections with a pencil, spirit level and straightedge, and use masking tape around all the squares to be painted. Apply the lighter shade to these squares, then remove the masking tape and allow to dry completely. Proceed in the same way for the darker squares. To finish off we used a sea sponge and the original colour to apply a gentle effect over the lighter squares. This helps to soften the look of the wall.





Incorporate bold colour

LEFT: Dark colour, when used incorrectly, can make a room appear smaller. But when used on accent wall your living space will suddenly seem larger. This is due to the fact that dark colours absorb the light.



Create your own art

RIGHT: In a rental apartment where the landlord or owner won't allow you to paint, but you can't stand the bland walls - don't give up. You can your own artistic touch to the walls with fabric wall panels that are easy and inexpensive to make. Make up at least three panels for an exciting focal point, and be sure to choose exciting fabrics that complement or complete the interior design in your space.

Here's how:

For the backing you can either use polystyrene, thick cardboard, or construct a frame from pine offcuts. Over the backing add a layer of thin batting and then cover with your chosen fabric. If you use polystyrene or thick cardboard for the backing, glue the batting and fabric to the back. When covering a built frame, it is better to staple the fabric to the back of the frame.

Freestanding art

Of course, there are other ways to create an accent - without damaging walls! Freestanding decorative panels, large framed mirrors, art displayed on an easel, these are all easy ways to incorporate colour and create impact and the landlord won't be able to complain!



go green for spring

No other colour in the spectrum is as soothing or relaxing as green. But this colour can totally overwhelm a space if not used carefully.

When looking at the psychology for the colour green, this colour is immediately associated with nature and symbolises life, growth and harmony. For this reason green is often used in decorating for its calming effect. For example, guests waiting to appear on television programmes often wait in a “green room” to relax.

Green is also thought to relieve stress and help heal. Certain studies suggest that green promotes relaxed breathing and contributes to reduced blood pressure.

To create a perfect room for total relaxation don't rush out and buy tins and tins of green paint. Green needs to be balanced and chosen carefully in order not to overpower a room.

Here are some tips to guide you in selecting the colour green for decorating your home:

- There are many hues and shades of green. Vibrant shades, such as lime and aqua, are considered refreshing. Apple and grass green are more stimulating and create an atmosphere of joy and lightness, while darker shades such as hunter's and olive green can add a touch of calm to a décor.
- To create a perfect room for total relaxation to achieve a balance with green and natural elements. Softer sage greens combined with crisp white, tan or rich chocolate.
- Start with the wall colour. If you select a dark green you will want to have window coverings in a lighter weight fabric and shade lighter of green than the walls.



ABOVE: A spring green can brighten even the darkest of days. Fresh, leafy green walls and window treatments envelop this tranquil sitting area. A dramatic display of pink flowers brings in more spring freshness. Neutral splashes of white, tan, and black add crispness while allowing the green to shine.

BELOW: Green walls, draperies, and rug share the same soft sage tone. The monochromatic elements act as a neutral backdrop for other colours. Rusty orange and tan chairs stand out against the green. Accessories, like the yellow table lamp and oil painting above the mantel, tie all the colours together.



- Green can be used in almost any room in the home. A study or den painted in hues of sage green is considered to be good for reading and learning.
- In a bathroom lighter, brighter shades of green are refreshing and relaxing - perfect for the busy executive. The downside of using green in a bathroom is that it does not compliment skin tone, so be sure to add plenty of lighting to a green bathroom!
- If you don't want a room that is too laid back, inject some red or orange.
- Colours that can be used with green are: browns, tan and ochre, yellow, orange, pink, aqua, and of course black and white.



ABOVE: A vintage white bathroom gets an update with apple green walls. Green is paired with pink and brown on the chic shower curtain. A crystal chandelier complements the chic vintage theme. To add interest to the white tiles, accent tiles in shades of green were used around the top border.

BELOW: Daring chartreuse green partnered with cool aqua creates a fun but relaxing room. A geometric area rug provided the colour palette for the space.



ABOVE: Construct a classic colour palette by choosing one main colour, like bright sage, for major elements like walls and upholstery. Choose a brighter colour, like golden yellow, as an accent for window treatments and accessories. Panelling and ceiling, both in white, add another classic touch to the bright room.



products we love

No matter how efficiently tiles are cleaned, grime and floor products build up a layer that traps dirt. A tile stripper is used to restore tile to its original state, or at least as close as possible to it, after which tiles can be resealed.

For my own floors, having a slate floor and wanting to keep it in top condition, I strip and reseal the tiles once every six months or so. It can be a messy process that involves a fair amount of elbow grease, but the result is a shiny, almost new, floor once I have finished.

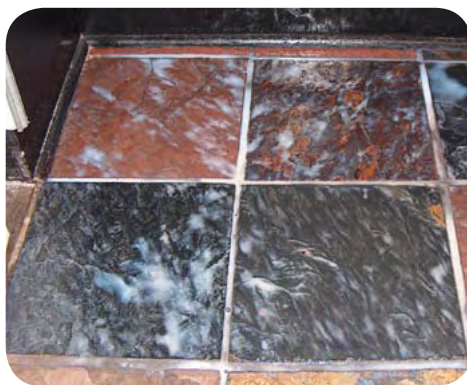
After numerous failed attempts to strip and restore tiles, the only product I now use is the Tile & Floor Care range.

Getting started

Only strip a small area at a time to ensure that the stripper does not dry. I recommend a one square metre.

Use masking tape to mask off any areas that need to be protected from splashes or spills.

By working in a small area you will have sufficient time to apply a liberal amount of stripper, allow five minutes for the stripper to work, and then scrub the area before it dries.



Use a stiff household scrubbing brush and clean water to remove build up. As you scrub wipe over the area with the cloth to ensure that all build up has been removed. You will be able to see the difference where build up is still on the tile. You may need to scrub a bit more to get rid of stubborn build up.

Rinse the area thoroughly with a clean cloth and water to remove all traces of stripper and build up.

Once done, you are ready to apply a new coat or two of Sealer.



The perfect Christmas gift for a special little girl.

Join our DesignTime Furniture Class on Saturday 22 November from 10:00 to 14:00 and create our wonderful Doll House Shelf - the perfect gift for any little miss!

Our DIY Diva gives you step-by-step instruction through assembly and finishing of the project.

The cost includes all materials that you need to complete the projects, each Diva is provided with the necessary tools - and you get to learn about, and use, the latest Bosch power tools.



Printed self-adhesive stickers of all the decorative details will be provided to complete the finishing of the Doll House Shelf at home.

Note: Each attendee to make own delivery arrangements, if necessary.

CLICK BELOW TO BOOK FOR THIS CLASS



Christmas Special

R800.00
including all materials, tools provided, and decorative stickers for finishing.



Learn how to make your own furniture

All materials and tools supplied



[CLICK HERE TO FIND OUT MORE](#)

elegant chandelier

Having searched everywhere for a black chandelier at an affordable price and coming up empty handed, I decided to try and make my own.

Not as difficult as I imagined!



make in a day!

You will need:

- 10 TPI scroll saw blade
- 6mm Supawood (MDF)
- Carbon paper and pencil
- Drill and 4mm drill bit

Here's how:

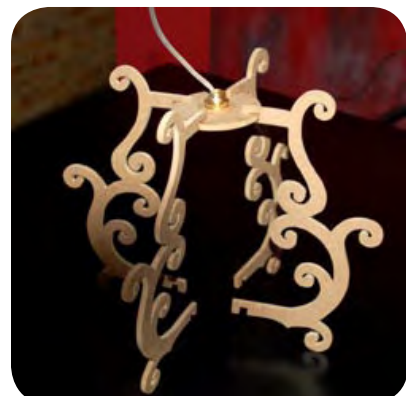
1. Start by tracing the design onto the Supawood. I use a sheet of carbon paper so that the copied design is dark and easy to see. Place the designs close to an edge of the board to make it easy to start the cutting process.

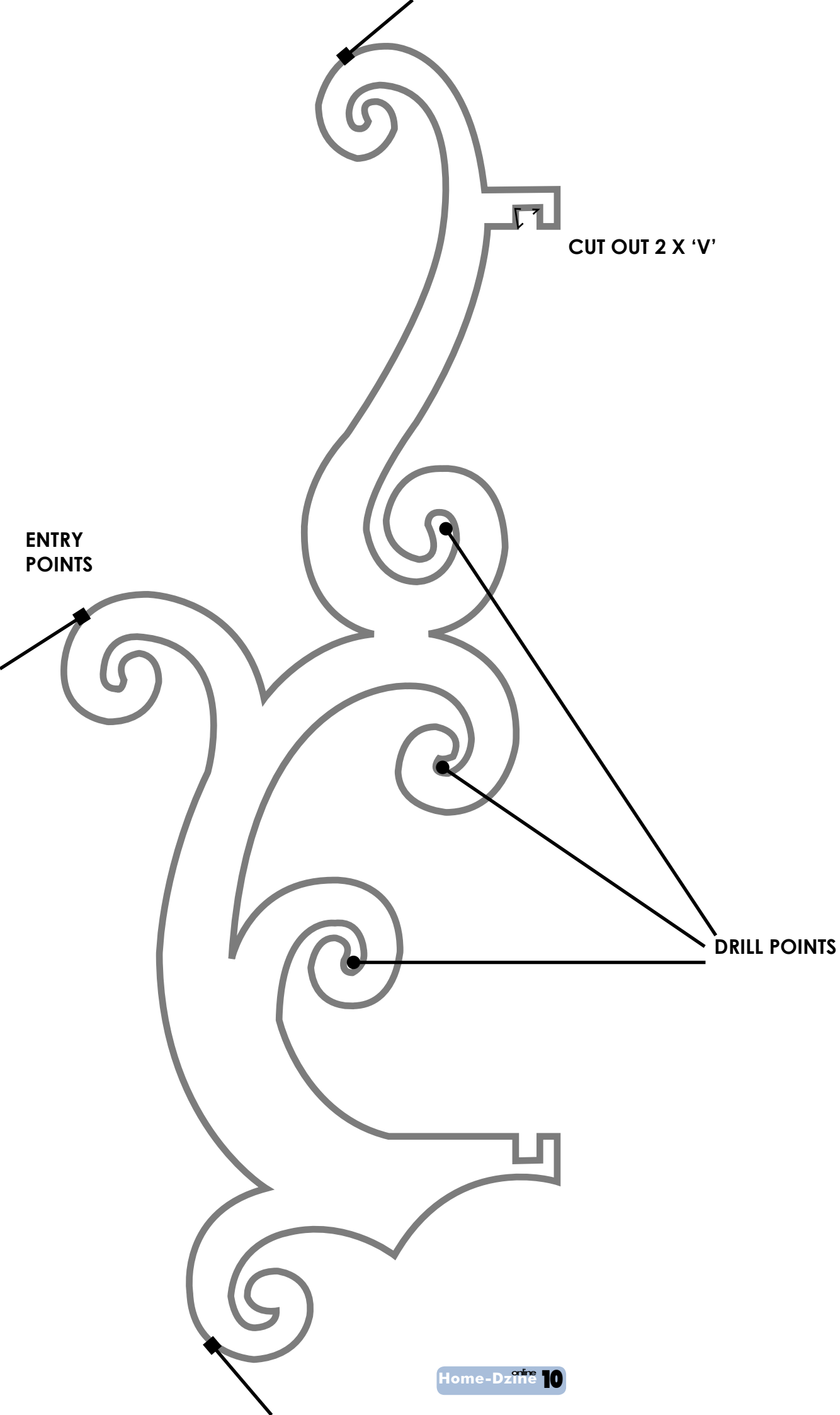
Tips before starting

I used a standard hand-held drill and a 4mm drill bit to create holes in some of the tighter sections of the pattern. This makes it easier to get in and out and have a smooth, clean cut and I don't have the luxury of a drill press!

The trick to getting in and out of tight turns is to make the cut and then reverse ever so slightly and gently turn - right or left - in small increments until you are facing in the direction that you want to go.

2. The top and base were drawn and cut out of 100 x 100mm squares. The base is simply a ring that will slot into the cut outs created at the bottom of the design. The top is a solid circle with a cut out in the centre to accept the light fitting, and 4 slots to accept the cut outs created at the top of the design. Use wood glue and clamps to affix the cut outs to the top and bottom.
3. Sand down any rough spots with 240-grit sandpaper.
4. Use high gloss spray paint to finish off. Apply at least three coats and allow sufficient drying time between coats.
5. Insert the light fitting and cable, add your crystal beads and hang!





CUT OUT 2 X 'V'

ENTRY POINTS

DRILL POINTS

affordable bathroom cabinet

This easy bathroom cabinet requires no special tools and can be assembled in 2 hours tops!

You will need:

16mm PG Bison BisonLam – Super White has been used for this project. Have all your board cut and edged at your local Timbercity.

- [2] 150 x 900mm BisonLam – top/bottom
- [4] 150 x 500mm BisonLam – sides/uprights
- [2] 150 x 216mm BisonLam – shelves
- [1] 140 x 398mm BisonLam – centre shelf
- [2] 250 x 532mm BisonLam – doors
- [1] 528 x 894mm Masonite (white) – backing board
- [4] Hinges
- [2] Handles
- [1] Mirror, cut to size
- [4] Wall hangers
- [1] packet of shelf supports
- [1] packet of screw caps – white

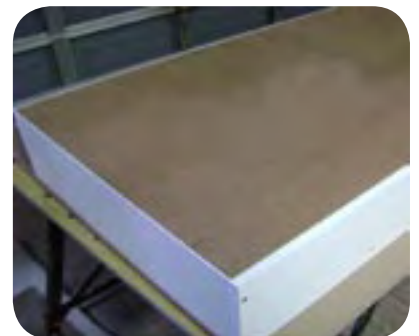
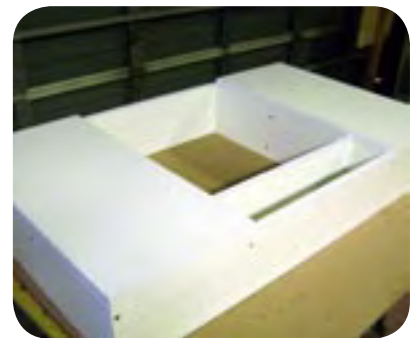
No More Nails adhesive

12mm wood screws

TOOLS: Drill/Driver with 2mm and 6mm wood bit, countersink and screwdriver bits, Bosch Tacker and staples (or staple gun), tape measure, pencil

Here's how:

1. Lay out all the pieces on a flat surface.
2. Use a pencil and tape measure to mark down 250mm and 30mm in from the front and back on the sides and uprights. Drill a hole at these marks to a depth of 100mm. Mark the depth out on the drill bit and use masking tape around the bit to ensure that you drill to the correct depth. These holes will be for the shelf supports.
3. Measure and mark where you want to position the central shelf. Pre-drill pilot holes at these marks, countersink and screw the central shelf to the uprights.
4. Pre-drill two pilot holes at each end of the bottom and top, and into the sides and uprights. Countersink these holes so that the screws will be flush with the surface of the board. Screw the bottom on top to the sides and uprights.



5. Screw 2 hinges to each door. Lay the door open and use a pencil to mark the position for the screw holes on the sides of the cabinet. Pre-drill the holes. Screw the hinges to the cabinet sides.
6. Turn the cabinet over and use the Bosch Tacker (or staple gun) to attach the backing board to the back of the cabinet.
7. On the door fronts, measure 250mm down and 30mm in and mark. Drill a 6mm hole for the handles. For a neat finish, when drilling through the BisonLam, stop as soon as you feel the point of the bit on the backside of the door, and then continue drilling from the back. This will ensure that the surface does not chip. Screw on the handles.
8. Use screw caps on all the visible screw heads for a neat finish.
9. Measure up and order your mirror. Use Alcolin Mount It adhesive to attach the mirror to the backing board.
10. Attach 4 wall hangers to the top of the cabinet. These will be used to mount the unit to the wall.



Brought to you by



PG BISON

TIMBERCITY

Now you can make your own custom furniture in our **designtime** furniture classes

Our DIY Diva gives you step-by-step instruction through assembly and finishing of the project.



Bedside Table

Saturday 11 October

10:00 - 14:00

Cost: R550 - incl materials



Coffee Table

Saturday 18 October

10:00 - 14:00

Cost: R650 - incl materials

designtime

Learn how to make your own furniture

All materials and tools supplied



[CLICK HERE TO FIND OUT MORE](#)

make this cute alphabet desk



This month's project, designed by Janice Anderssen and brought to you by PG Bison and Timbercity, is a great project for the novice DIY enthusiasts. This kiddies table and chair is easy to make and requires no special tools or materials.

All you need for this quick and easy project is 12mm Supa Wood, Rust-Oleum Painter's Touch Spray Paint, and a weekend to make.



You will need:

12mm PG Bison Supa Wood. Have your local Timbercity cut all boards to size for easy assembly. Be sure to specify PG Bison Supa Wood for quality board products

- [3] 400 x 600mm table top and sides
- [1] 100 x 600mm table support
- [1] 30 x 600mm pine dowel
- [2] 300 x 600mm chair sides
- [1] 200 x 376mm chair back
- [2] 250 x 376mm chair seat and shelf
- [2] 30 x 376mm pine dowel

Wood screws

Plastic screw caps (white)

Rust-Oleum Painter's Touch Spray - Brilliant Blue -

Apple Red - Sun Yellow

White acrylic base coat or primer

120- and 240-grit sanding pads, or sandpaper

TOOLS: Cordless screwdriver, Drill, 2mm drill bit, Jigsaw

DIY Tip:

As an alternative to 30mm dowel, use a pine curtain rod.

Here's how:

1. **Refer to Cutting Diagram on the back page** for cutting instructions for the table and chair sides.
2. Lightly sand all edges with 120-grit sanding paper. Chamfer (round off) all straight edges. Take care not to sand too hard as this will damage the surface of the SupaWood.



3. Drill pilot holes at the following markings:

Chair sides

- 15mm down from top / 15mm in from back (top dowel)
- 140mm & 280mm down from top / 10mm in from back (seat back)
- 140mm up from bottom - 80mm in from back & 20mm in from front (shelf)
- 200mm up from bottom / 80mm in from back & 20mm in from front (seat)
- 110mm up from bottom (bottom dowel)

Table sides

- 15mm down from top at centre line (for top dowel)
- 160mm down from top / 50mm in from both edges (for table top)
- 140mm up from bottom / 20mm & 40mm in from one edge (support)

Note: As you start to assemble you should also drill pilot holes into the piece to be joined. Use the predrilled piece as a template for this.

- It is better to prime and paint all surfaces prior to assembly. Use a white base coat or primer over all surfaces. Pay particular attention to the edges of the Supa Wood, and be sure to coat the entire surface with paint. Lightly sand with 240-grit sandpaper for a smooth surface.
- Apply Rust-Oleum Painter's Touch to the various components as shown in the main picture. Apply two coats, allowing sufficient drying time between coats.
- Assemble the pieces. Cover all screw heads with white caps. Apply a small bead of glue to the screw heads to ensure that the caps are firmly glued into place. Alternatively, countersink all screw holes when drilling pilot holes.



REFER TO CUTTING DIAGRAM ON BACK PAGE

what is plywood?

For project where the board is not visible - as in an upholstered ottoman - Plywood is the practical and affordable choice.



Plywood is constructed by bonding together an odd number of veneers with the grain of each layer being perpendicular to each other. In essence, Plywood is homogenic in structure which allows for a stronger and more stable board in both directions.

Exterior or Marine Plywood is water-resistant for exterior applications.

TIMBERCITY



decorating divas bring you...

Affordable, ultra chic furniture for your home that you can order online.



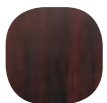
squareline bathroom stackable storage

Manufactured using high quality MelaWood in your choice of finish, you don't have to spend a fortune to add up-to-date style and design your storage to fit your bathroom.

Colour Choices



Natural
Oak



Burgan
Mahogany



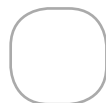
Seringa



Storm
Grey



Pearl
Grey



White



Excluding delivery. Allow 4-6 weeks for manufacture.

Decorating Divas manufactures a wide range of affordable furniture. Headboards, platform beds, theme beds, side & dressing tables, wardrobes, bathroom furniture, and so much more. We also offer a service for those pieces that are in desperate need of a new life.

[Click here for more information](#)



doing it for yourself!

With so many people opting for the do-it-yourself route in an attempt to save money - or as a means of expressing their creativity - it helps to bear in mind that while you will definitely save money, you should be aware of the pros and cons before you start. Not all projects are as simple as they sound. Here are some tips to help you plan your project:

Plan your project:

Before you even consider ripping up that dingy carpet and installing a laminate floor, or dismantling your 1970s bathroom – be prepared! As the saying goes, “Fore armed is fore warned.” Make sure you know what is involved before you start. Even the easiest DIY project can turn into a nightmare with the omission of one single step in the process. “I always recommend that each and every project be broken down into sections, and that the homeowner looks at every aspect of a project as step-by-step rather than a whole project.” Says Janice Anderssen, owner of www.Home-Dzine.co.za and www.DIY-Divas.co.za. “In this way you apply much closer attention to small details that might otherwise be overlooked.”

Today you can find step-by-step instructions for almost any type of do-it-yourself project on the Internet. The only caution is to try and find as much “local” information as possible. There is no point in visiting overseas sites that will confuse rather than educate you.

Tools and materials:

As you work through each individual step of the project you will also realise what tools and materials will be needed. It is far better to have everything on hand once you start, than have to stop halfway through and try to find what you need. Never mind the fact that an essential item required might not be in stock.

This is also a good way to determine whether or not you have the experience with the tools needed for the project. If you don't know how to use a specific tool find out who does courses, or can provide information. For more information on Power Tool and Basic Woodworking courses you can visit: www.DIY-Divas.co.za.

Costing the project:

Having planned the project and worked out the tools and materials necessary, the next step is to determine how much the project will cost. While you will save hundreds, if not thousands, of Rand by doing it yourself, it is always a good idea to get a couple of quotes from professional contractors before you start – so that you have an idea of what costs you are looking at. For some projects the amount of work involved as opposed to the cost may be better off tackled by a professional.

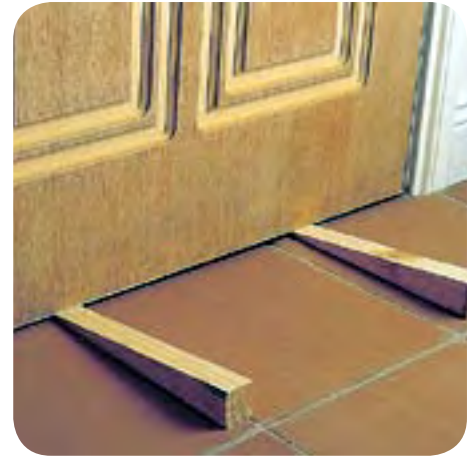


Janice Anderssen

how to hang a door

Although timber or hollow-core doors are supplied in standard sizes, almost all doors have to be trimmed to fit the opening as a result of floor level, or improper installation of the door frame.

1. Make sure that the door is the right way round for hanging. A new hollow-core door should indicate the side on which the handle/lock is to be fitted. On the inside of the door is a block of wood that usually extends approximately 200mm up and down from the centre of the door. In the event that the door is not marked, use a screwdriver to tap down the side of the door until you will hear a difference.
2. Position the door in the opening to check the fit with correct clearance all round, wedge the door in the frame in its correct position. Remember to wedge it up to the correct height for floor clearance.
3. Position the hinge against the door, and mark both the door and frame with a pencil for the top and bottom of each hinge. The hinges should be set approximately 175mm from the top and 250mm from the bottom of the door.
4. Remove the door and place on a level surface with the hinge edge upwards. Lay the opened hinge against the pencil marks with the spindle section outermost, projecting from, and parallel to, the edge of the door. Mark around the edge of the hinge with a pencil. Repeat for the other hinge.
5. Measure the thickness of the plate and mark this on the door face with a pencil line. Using a sharp chisel, cut out the shape of the hinge by tapping gently, but firmly with a mallet, and to the correct depth. Remember to bear in mind that the pencil line is outside the hinge so you will need to cut inside the line.
6. Use the chisel to take out the cutting and then make sure that each hinge beds neatly and is flush with the surface of the wood.
7. Drill pilot holes for the hinge screws, using the hinge as a template and marking the hole position with a pencil. Make sure that your marking are in the centre of the hinge holes to avoid the screws causing the hinge to move when screwed into position. Use 25mm wood screws to attach the hinge to the frame.



DIY Tip:
Be careful not to go too deep with the chisel as this will cause the door to stick.

Bond with us!

With a Virgin Money Home Loan you will be left with more cash in your pocket, immediate answers, no hidden fees and you can pay off your home loan in 30 years.

For more information on the Virgin Money Home Loan [click here](#).



Terms and conditions apply. Virgin Money South Africa (Pty) Ltd. Supported by Absa Bank Ltd, Reg nr 1986/004794/06. An authorized financial services provider. Registered Credit Provider, Reg nr. NCRCP7.

8. Position the door into the frame in the open position and use wedges to line up the hinges with the recesses and fix with one screw in each hinge.

DIY Tip:

Check the operation of the door before finally fitting the remaining screws.

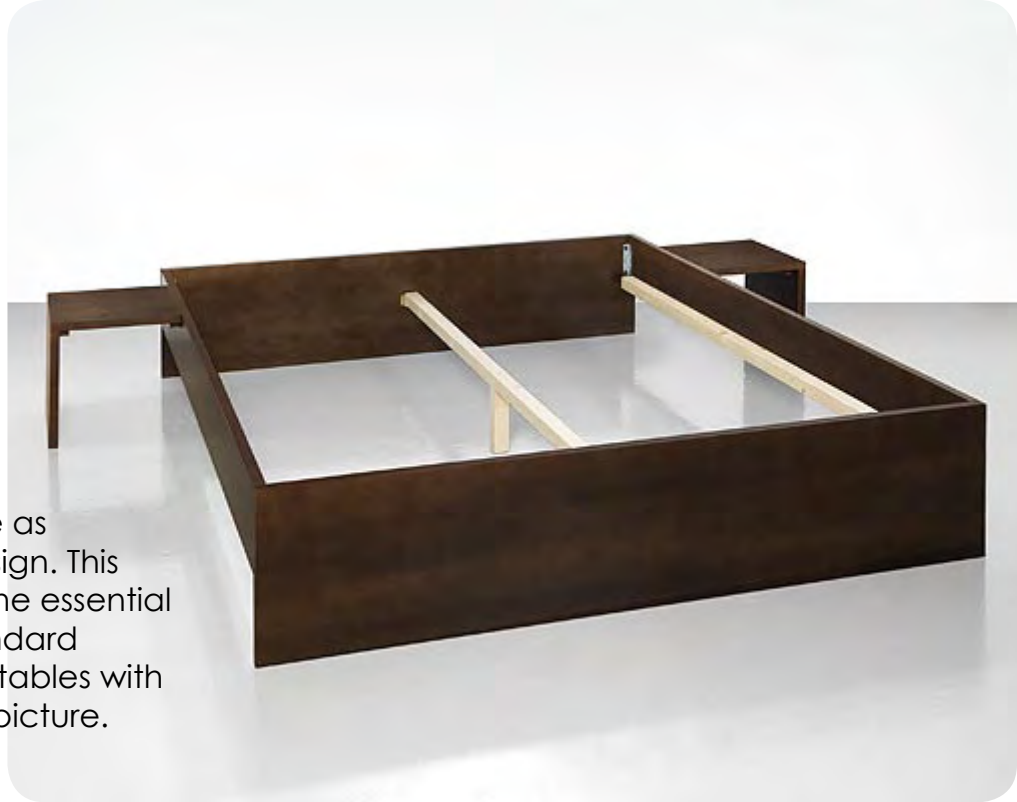


9. To insert a mortise lock, first drill a series of holes, then chisel out between them to square off the recess. These holes must be perfectly straight, so you'll need a guide to keep the drill in line. Stand the door on edge with the latch-side facing up; check it for plumb. Use the lock or template provided to locate the mortise holes. Mark the centre of the holes with a nail. Drill the holes with an auger bit. Chisel out between the holes to square off the mortise. Then chisel a shallow recess for the lock plate.



make your own box bed

Simple, streamlined shapes are as popular as ever in furniture design. This low-lying bed comprises only the essential components and allows a standard double mattress. Two bedside tables with a similar design complete the picture.



You will need:

- [2] Side panels 2010 x 190 x 27mm laminated pine
- [2] Head/base 1664 x 380 x 27mm laminated pine
- [2] Supports 1930 x 45 x 45mm square pine
- [1] Centre support 1990 x 45 x 45mm square pine
- [1] Centre leg 190 x 45 x 45mm square pine
- [4] Bed brackets 127 x 22/28mm
- [2] Bed centre joints 75 x 75mm
- [4] Table tops/side panels 380 x 353 x 27mm laminated pine
- [4] Screw strips 380 x 27 x 27mm pine
- 4 x 60mm wood screws
- 4 x 20mm round head screws
- 4 x 17mm flat head screws
- 4 x 45mm flat head screws

TOOLS: Jigsaw, sander, drill, cordless screwdriver, set of wood drill bits, countersink bit, sandpaper 120 to 240-grits, sponge, folding rule, soft pencil, rubber, pencil sharpener
Wood stain, paintbrush or fabric roll

Here's how:

1. The head section, base section and side panels are fastened together to form a frame using screw brackets. The fittings are positioned so that the long arm is always screwed to the short side (the head or base section) and the short arm is always screwed to the long side (the bed).
2. Position side panels, head and base section together on their upper edges in the way you want to fasten them; the side panels are enclosed within the head and base sections. Now assemble the frame using round head screws (4x20).
3. The slatted frame rests on square timbers, or supporting timbers that are mounted flush with the bottom of the bed side panels on the inside surfaces. The supporting timbers are shorter than the bed side panels and mounted on the panels centrally in accordance with their length: you must therefore leave enough room for the bed joints that are used to attach head and base sections to the side panels.



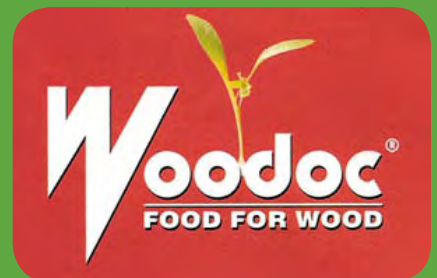
4. Pre-drill holes for supporting timbers. Countersink holes pointed towards centre of bed. Mount supports with screws (4x60).
5. Position centre leg centrally below supporting timber and screw in place. Pre-drill holes in supporting timber and countersink holes at the top. Use screws (4x60) to mount centre leg.
6. Fasten supporting timber with centre bed joints to head/base sections of frame. These joints consist of two parts: a supporting bracket and retaining plate. The supporting bracket goes on the front side of the supporting timber - the retaining plate goes on head and base sections. Use flat head screws (4x17) to mount.
7. Bedside table: The table top and side panel are fastened together from the insides with screws to form an angle using a screw strip. Pre-drill screw strip from both sides in advance. Ensure that you drill the holes so they are staggered diagonally and never at the same height, to prevent the screws from hitting each other in the strip. Countersink holes on visible surfaces.
8. Place the side panel on your work surface with the visible surface facing downwards. Position the pre-drilled screw strip onto the side panel so that it is flush with the upper edge and then fit the screw strip using screws (4x45).
9. Place the table top on your work surface with the visible surface facing downwards. Place the side panel fastened to the screw strip on top so that it is flush with the edge. You can now join the table top and side panel together using screws (4x45).
10. Use screws (4x45) to fit screw strips (pre-drilled in step 1) so they are flush with edge of table top. Position bedside table at the point along bedside frame where it can be most conveniently reached from the bed. Secure it in place using screws (4x45).



Finishing

Sand all edges with 180-grit sandpaper at a 45° angle to create a small bevel. Use your sander to sand all visible surfaces in the direction of wood grain, first with coarse sanding paper (120) and then fine (240). Wipe off the dust. The wood is now ready for surface treatment.

Woodoc Stain Concentrates are suitable for use in both interior and exterior Clear Woodoc Sealers. They contain transparent iron oxides which absorb ultra-violet rays when added to exterior Woodoc Sealers. **Woodoc Stain Concentrates** are transparent showing the wood's natural grain through the surface coating and giving it an uncommon warmth and beauty. **Woodoc Stain Concentrates** are available in eight natural wood colours.



MERANTI

IMBUIA

OREGON

OAK

YELLOWWOOD

ROSEWOOD

EBONY

TEAK

GardenMail



Seedlings have many functions in a garden. They are most commonly used to add splashes of colour to a garden and sometimes as a source of cut flowers. Colour can help to lead the eye to a feature that you want to accentuate. Smaller growing seedlings can be used to edge beds. Seedlings look especially good when planted into pots, hanging baskets or window boxes. Using different colours can create different moods. For example, a garden can be made to look cooler by using white or blue colours. A warmer look can be achieved using reds and yellow colours.

Soil Preparation

In order to achieve the best results the soil should be prepared correctly. This ensures the best use of water and sufficient nutrients for the plants. The soil should first be loosened to a spade depth (30 cm). Then add about half a bag of compost per m². To this area, add 1 scooped handful of superphosphate and 2 scooped handfuls of 2:3:2. Alternately, you can scatter 200g of seedling food over the area.

Watering

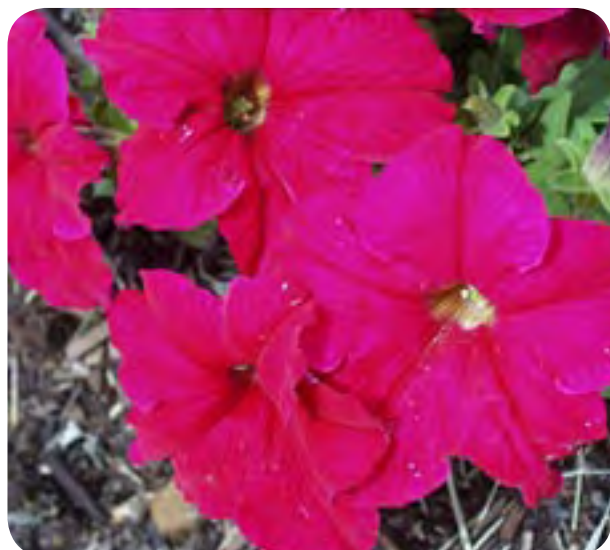
Seedlings enjoy good watering. Seedling like Pansy, Viola and Petunia do not like wet feet. Too much watering leads to fungal problems.

Fertilising

A monthly feed with Multifeed will ensure that the plants bloom for longer. Other feeds that are very effective are Phostrogen and Seagro.

Seeds

It is more economical to plant seeds but more time consuming and you will wait longer for a show in the garden. Seeds can either be planted in the area where they are to remain, or planted into sowing trays. Seeds that need a little more care should be sown into seed trays that have been filled with seedling soil. When they are large enough they can be planted out into the garden. The soil preparation will be the same as for seedlings. When sowing the seeds, distribute them evenly over the soil surface. If the seeds are very fine, mix them with maize meal before you sow them. This will enable you to see more or less where they have landed.



Visit [GardenShop](#) to download the latest issue of [GardenTalk](#)

the right tool for the job!

When trees need to be trimmed to prevent them from encroaching on a neighbour's property, or because they become overgrown, the tool to have for this job is the Bosch All Purpose Saw.



Regardless of whether you want to cut slats to length, saw branches, plastic or metal pipes, or saw flush to a wall: the Bosch All Purpose Saw gets the job done quickly and easily.

Tips for Trimming a Tree

If you need to remove thick, heavy branches, *these should be cut flush to the collar at the base of the branch, and not flush with the trunk. The reason for this is that the collar is an area of tissue containing a chemically protective zone. When the collar is removed, the protective zone is removed, causing a serious trunk wound. Wood-decay fungi can then easily infect the trunk. If the pruned branch is living, removing the collar at the base still causes injury.

When cutting branches more than 40 to 50mm in diameter, use a three-part cut. The first step is to saw an undercut from the bottom of the branch about 150 to 200mm out of the trunk and about one third of the way through the branch. Make a second cut from the top, about 80mm further from the undercut, until the branch falls away. The resulting stub can then be cut back to the collar of the branch. If there is danger of the branch damaging other limbs or objects on the ground, it should be properly roped and supported, then carefully lowered to the ground.

Safety Tips

- Wear protective gloves when cutting back branches, and protective goggles.
- Rope and support large branches.
- Work with the saw pointing away from your body.
- Position your ladder to be secure and offer a comfortable position.
- Never use a power tool in the garden if it is raining, or have a sprinkler on close to where you are working.



Q zone

Send your Q & A for decor, decorating and DIY dilemmas to home-dzine@iburst.co.za.



Q. Gaynor

Huge thanks for the wonderful and extremely informative Home-Dzine online. Loads of great ideas which I will definitely put to use. I need your professional advice please. The passage in our home was painted a terracotta colour when we moved in several years ago. We have lived with it, but now it is time for a change. The floor tiles are a black slate so I need to brighten the passage up from its present rather dark state. It is not a very long passage and the rooms leading off it are painted in varying light earthy tones. What can you suggest?

A. Janice

I would definitely recommend a lighter colour for the walls, especially with black slate on the floor. Why not go for one of the 'earth tones' such as taupe, camel or biscuit. These neutral colours would lighten up the space and work well with the dark floor and earthy tones in the rest of the rooms. I recently painted a room with Prominent Paints Ultramatt in cream. The colour looks like thick, whipped cream and is absolutely stunning, despite its boring name! Although for your passage I would recommend that you use Ultrasheen so that it is easily washable.

Q. Shelley

I just found your website by chance (looking for countertops) and will be using it frequently. Myself and two daughters have always done and been interested in DIY. But as time goes on (age) good help becomes a Godsend. My hubby and I have been planning on remodelling our kitchen, the problem is I cannot decide on the colour scheme. It is a fairly small narrow space on the south side of our house and I would like it to look bigger and lighter. I thought of having all the cupboard doors a light green or light blue - but what is the best colour to use for a counter top other than plain white? The other thing that worries me - if I go with the painted doors will this not chip sooner than the wood doors?

A. Janice

With regards to your kitchen revamp. If the kitchen is on the south side of the house you may find that blue will make the kitchen appear cold, while green (unless you use a very pale or light green) may have a darkening effect. You must take a look at the new PG Bison Formica range of laminates. They have recently introduced some absolutely stunning colours that would be perfect for applying to an existing countertop - or doorfronts - instead of painting.

If you primed, painted and finished off the doors with polyurethane varnish, you wouldn't have to worry too much about the paint chipping - or why not simply replace the doors with pre-cut supawood and then paint?

Q. Crystal

Hope you can help. My friend wants to redo her bedroom in French flair, her floors are wooden, walls still undecided, wardrobe she says will be dove grey, I think she means distressed look. She prefers a natural look but French, she likes silk & velvet no florals or not too much in accessories. I'm trying to convince her to choose a wall colour first before headboard cover material might be biggie best collection for material. I have convinced her to do a sample board first. Any tips, please.

A. Janice

I would tell your friend to rather choose her fabric BEFORE painting the walls. It is much easier to repaint than to recover. Once she has selected her fabric, she can use that to decide on a nice wall colour.

Links for this issue

[Bosch Power Tools for DIY](#)

[CPW](#)

[Decorating Centre](#)

[Dremel MultiTools](#)

[Garden Shop](#)

[Home Comforts](#)

[Kreg SA](#)

[PG Bison](#)

[Prominent Paints](#)

[Rust-Oleum](#)

[Skil](#)

[Timbercity](#)

[Woodoc](#)

Decorating Divas

CREATING CUSTOM FURNITURE
FOR YOUR HOME

DIY Diva

CLICK HERE FOR INFORMATION ON
DIY & POWER TOOL COURSES

Go Shopping

BUY RUST-OLEUM PRODUCTS
AND ACCESSORIES ONLINE

**Don't forget to join
our Community Blog
to post your enquiries
or submit feedback.**



**Now you can make your own custom furniture in our
designtime furniture classes**

Our DIY Diva gives you step-by-step instruction through assembly and finishing of the project.

Need a back-issue of Home-Dzine Online?

CLICK HERE

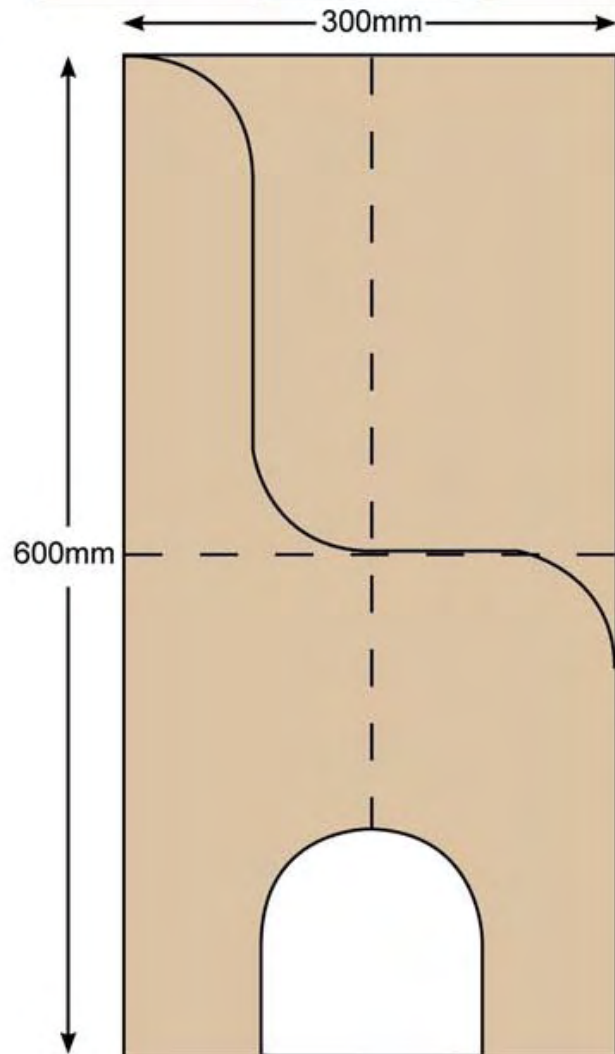
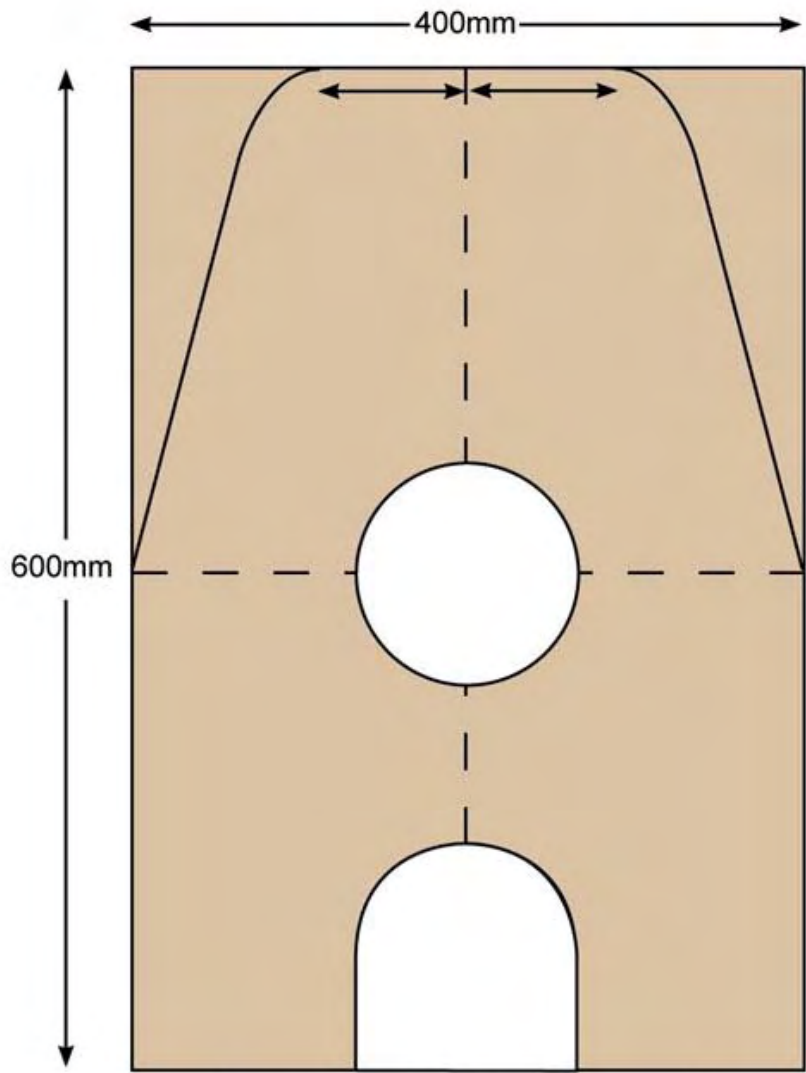
Want to subscribe?

CLICK HERE

Need to send us an email?

CLICK HERE

alphabet desk



box bed

